

## Integrating Database Search with DataAssist

---

### Introduction

DataAssist generates all the pages you need to manage your database online, including search and results pages. While the search functionality allows for multiple criteria, DataAssist does not offer the depth of sophistication possible in Database Search. This TechNote shows you how to combine the two products to get the best of both worlds.

### The Solution

Integrating Database Search with DataAssist is a very straightforward procedure and can be described in two simple steps:

1. Create all your desired pages in DataAssist except the search page.
2. Run the Database Search wizard on the results page which automatically creates the Search page.

These two steps will connect the two program's generated output and permit greatly enhanced searches leading to more specific results.

### Building the pages with DataAssist

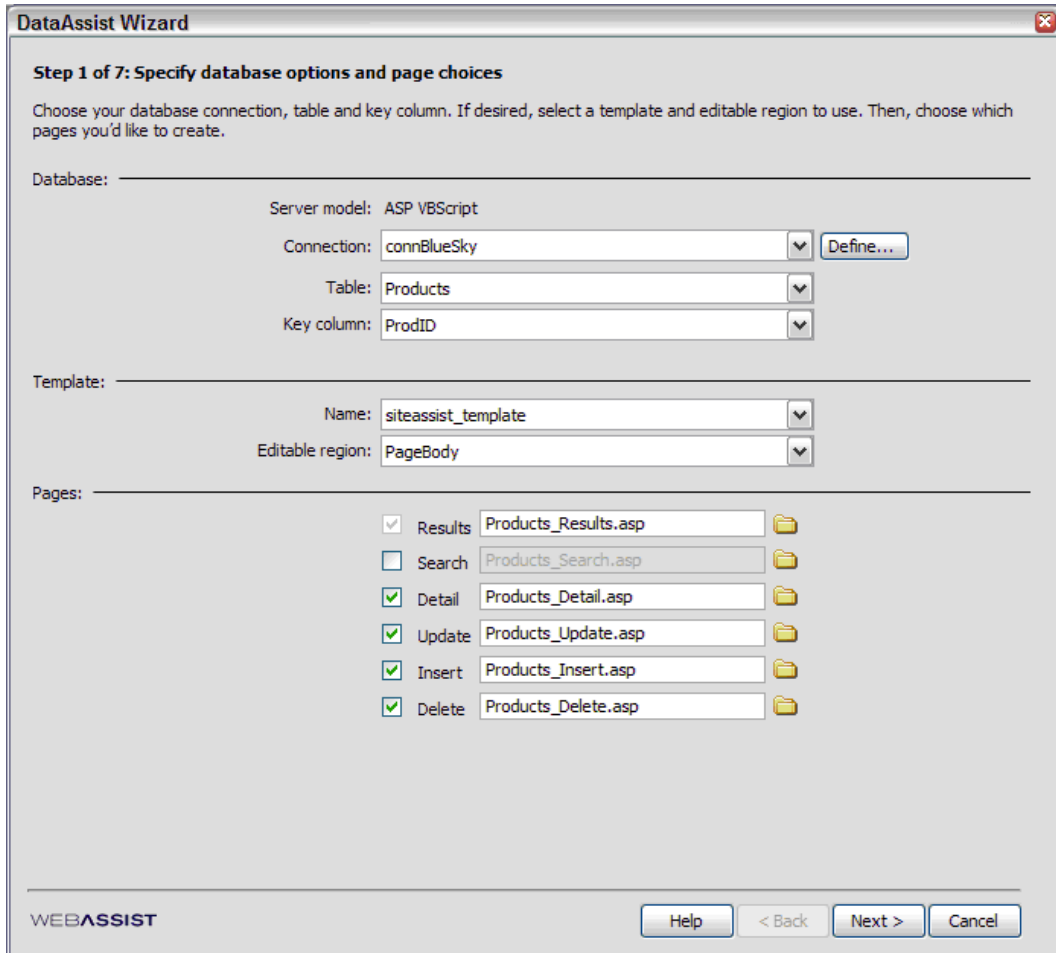
---

To generate the appropriate pages in DataAssist, you only need to make sure you take one step: deselect the option to build a search page. This action leaves the door open for Database Search to later create the search page and apply the necessary functionality.

#### To generate the necessary pages with DataAssist:

1. From the **WebAssist** category of the **Insert** bar, choose **DataAssist**.
2. On the first step of the wizard, select your connection, table, key column and template as usual.
3. Clear the **Search** checkbox.

Later, you'll use Database Search to create your search page so there is no need to generate it through DataAssist.



**DataAssist Wizard**

**Step 1 of 7: Specify database options and page choices**

Choose your database connection, table and key column. If desired, select a template and editable region to use. Then, choose which pages you'd like to create.

Database: \_\_\_\_\_

Server model: ASP VBScript

Connection: connBlueSky

Table: Products







Key column: ProdID

Template: \_\_\_\_\_

Name: siteassist\_template

Editable region: PageBody

Pages:

<input checked="" type="checkbox"/>	Results	Products_Results.asp	
<input type="checkbox"/>	Search	Products_Search.asp	
<input checked="" type="checkbox"/>	Detail	Products_Detail.asp	
<input checked="" type="checkbox"/>	Update	Products_Update.asp	
<input checked="" type="checkbox"/>	Insert	Products_Insert.asp	
<input checked="" type="checkbox"/>	Delete	Products_Delete.asp	

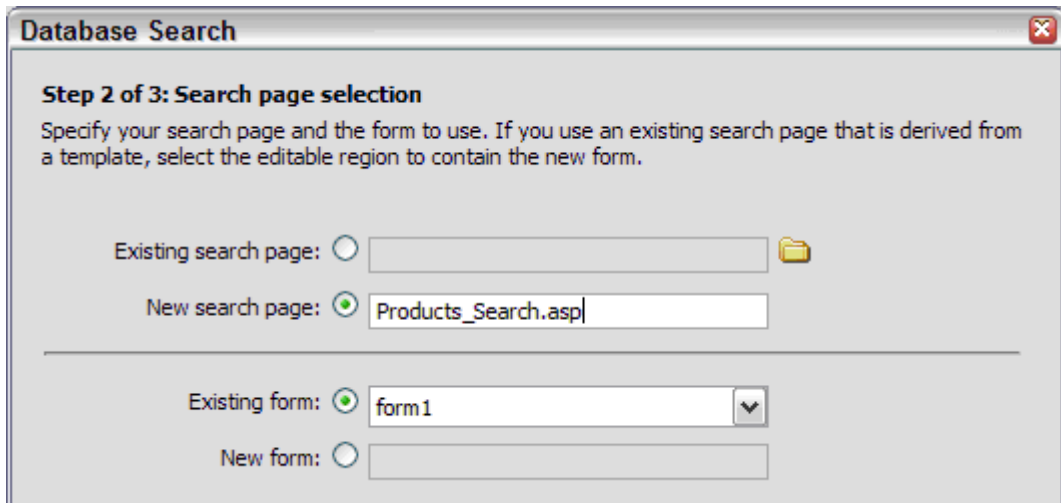
WEBASSIST

4. Set your other options on the first step of the DataAssist wizard as desired and click **Next**.
5. Complete the DataAssist wizard, specifying the desired values for each step; when you're done, click **Finish**.

### To add Database Search functionality and build the search page


1. Switch to the **results** page, previously created by DataAssist.
2. From the **WebAssist** category of the **Insert** bar, choose **Database Search Wizard**.
3. Verify that the values on the first step of the Database Search wizard accurately reflect the desired recordset and database type; click Next when you're done.

- On step 2 of the wizard, enter the name and path you want the search page to have in the New search page field. Leave the other values at their default and click Next.




**Database Search**

**Step 2 of 3: Search page selection**  
Specify your search page and the form to use. If you use an existing search page that is derived from a template, select the editable region to contain the new form.

Existing search page:   

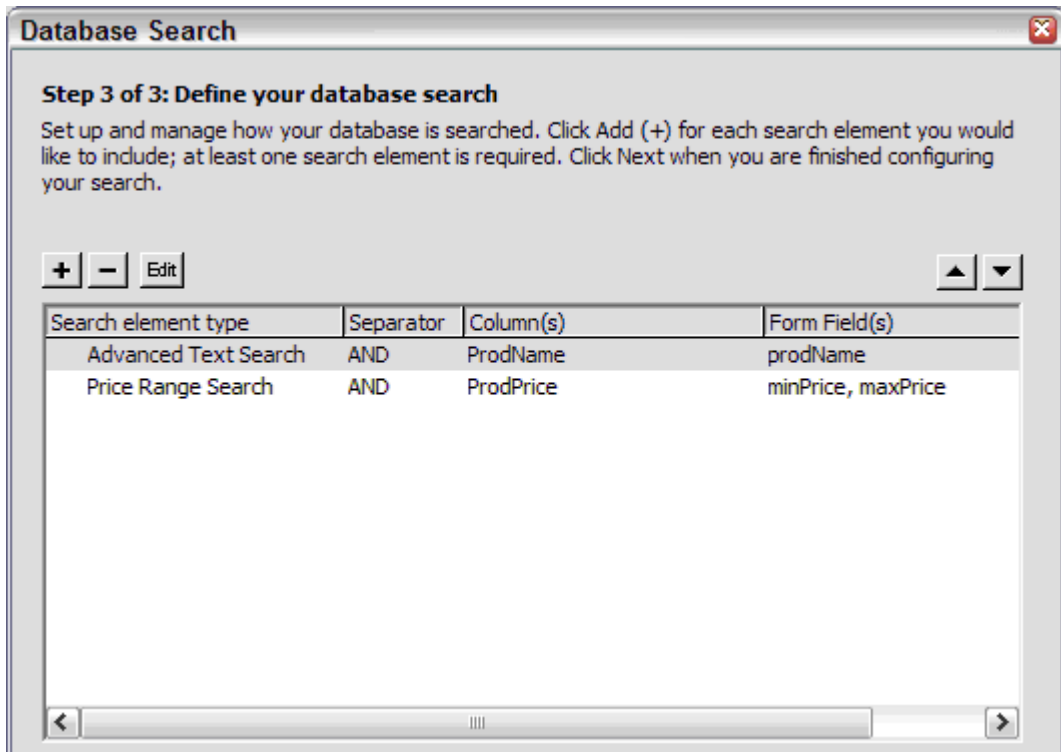
New search page:

---

Existing form:   

New form:

- On step 3 of the wizard, set your database search criteria; click Next when you're done.



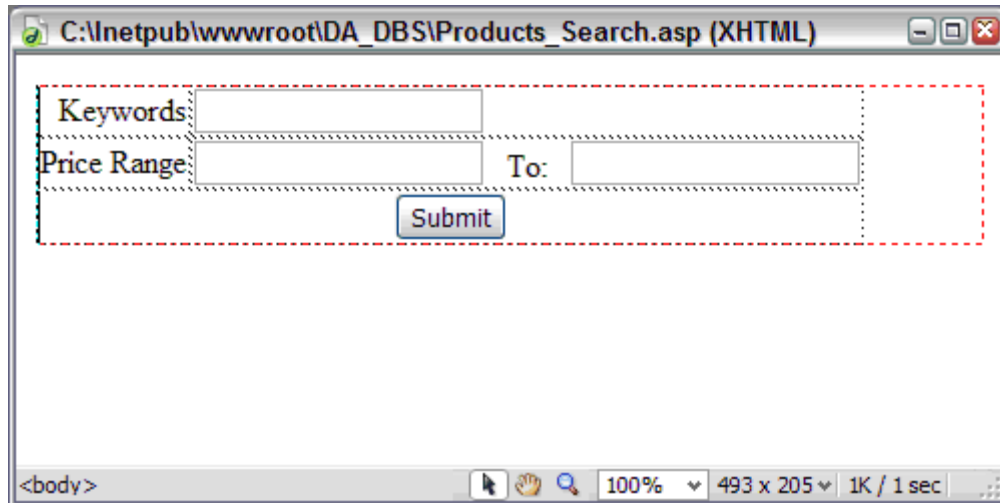
**Database Search**

**Step 3 of 3: Define your database search**  
Set up and manage how your database is searched. Click Add (+) for each search element you would like to include; at least one search element is required. Click Next when you are finished configuring your search.

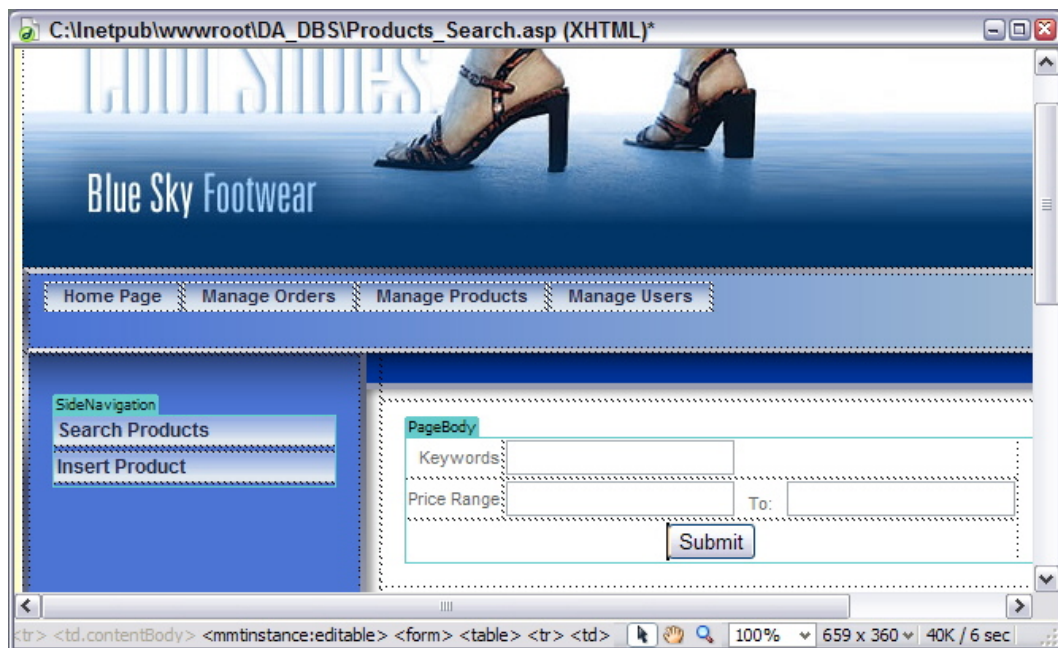
Search element type	Separator	Column(s)	Form Field(s)
Advanced Text Search	AND	ProdName	prodName
Price Range Search	AND	ProdPrice	minPrice, maxPrice

- After reviewing your choices, click Finish.

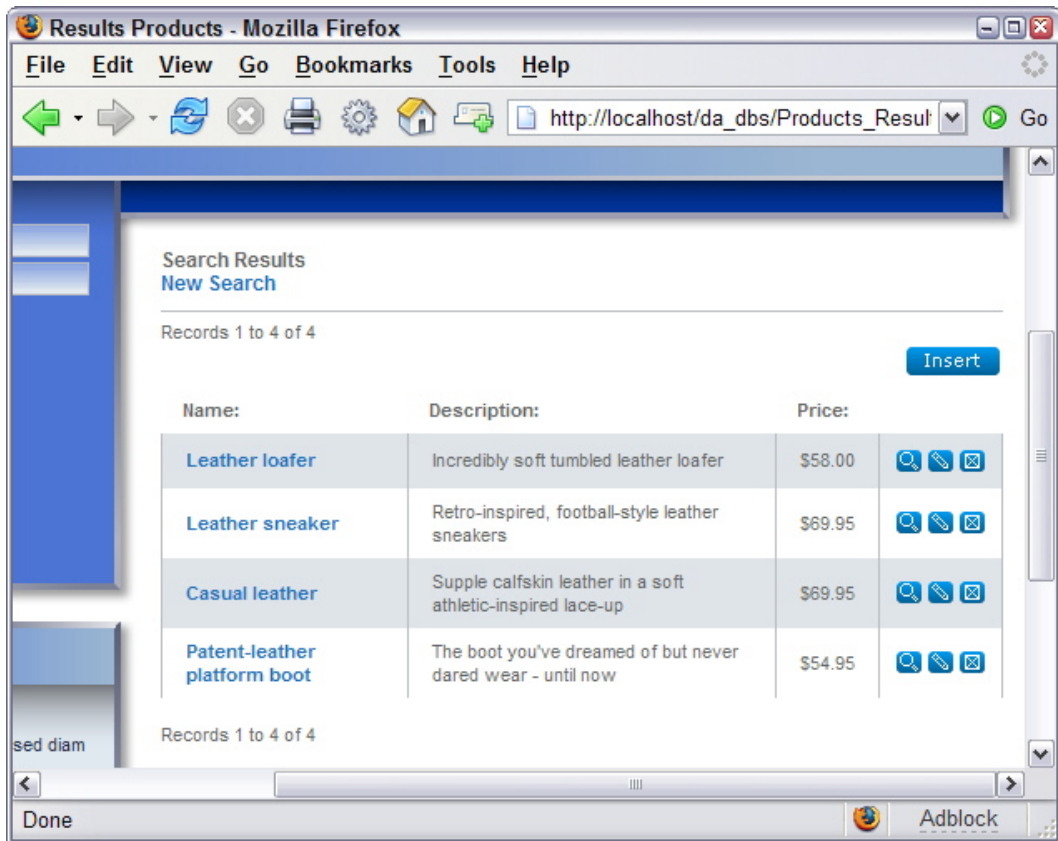
Database Search will create the search page with the requested search criteria and integrate the necessary server-side code for the recordset found on the results page.



7. Apply your template to the search page and style as appropriate.



8. Save your search and result pages.
9. Test the application in your Web server by opening the search page and entering various search criteria.



If you'd like to add additional search criteria, first add the desired form fields to the form on the search page. Then, double-click the WA Database Search entry in the Server Behaviors panel. You can either work with the criteria directly or select Open Wizard.