

A horizontal banner with a green-to-white gradient background. The top half is a solid green color, and the bottom half is a white-to-green gradient. The text is centered in the white area.

SiteAssist Professional™

Complete expertly-designed customized Web sites in seconds

SiteAssist Professional™
Help Documentation

Copyright © 2008 WebAssist.com Corporation
All rights reserved.

User Interface Access

WebAssist Category of Insert toolbar



SiteAssist Professional Wizard



SiteAssist Professional Layout Manager



Create new Page type

Build SiteAssist Professional Site*

- Site > New SiteAssist Professional Site
- Modify > New SiteAssist Professional Site
- Insert > WebAssist > SiteAssist Professional > Build Site...

*Option not available when the current site in Dreamweaver already contains a SiteAssist Professional site.

Modify SiteAssist Professional Site*

- Site > Modify SiteAssist Professional Site
- Modify > Modify SiteAssist Professional Site

*Option only available when the current site in Dreamweaver is a SiteAssist Professional site.

SiteAssist Professional Layout Manager

- Insert > WebAssist > SiteAssist Professional > Layout Manager

Create page type*

- Insert > WebAssist > SiteAssist Professional > Create Page Type

*Requires that a content page created by SiteAssist Professional be open in Dreamweaver.

Creating a SiteAssist Professional Site

Creating your SiteAssist site is a 5-step process.

1. [Configuring general site settings](#)
2. [Selecting layout options](#)
3. [Configuring pages and navigation](#)
4. [Configuring your site footer](#)
5. [Preset and Output options](#)

After completing the wizard, SiteAssist Professional will create all the pages and navigation you specified to be created. If you want to make any changes, you can always [re-enter the SiteAssist Wizard](#).

Step 1: Configure general site settings

SiteAssist Professional allows you to specify a site type which determines the types of pages that are created for your site. You will have the option later in the wizard to review the pages that will be created and customize them to suit your needs.

Note: The [last step of the wizard](#) allows you to specify a custom name for the site type that you have used. This allows you to create multiple sites using your own custom site types.

Site type: Choose the site type that best matches the kind of site you wish to create.

Description: The Description text lists the pages created for each selected site type.

Step 2: Select layout options

Home Page & Content Page

Step 2 allows you to select Layout and Design configurations for both the home and content pages of your site.

Layout: Select the layout you want to use in your site.

Design: Select the design you want to use in your site.

Define: Opens the [SiteAssist Professional Layout Manager](#) which allows you to import a new Layout, among other features.

The Preview pane displays how a selected configuration will appear in the pages created for your site based on your selections. Click once on a preview image to view the configuration in your default browser.

SiteAssist Professional™ - Wizard

Step 2 of 5: Select layout options

Select your site's layout and design for the home and content pages, including navigation options. To preview your choices in a browser, click a preview image.

Home Page & Content Page

Layout:

Design:

Preview

Home Page

Header

IMAGE OBJECT
IMAGE OBJECT
IMAGE OBJECT

H1 Main Content

H2 LEVEL HEADING

Content Page

Header

IMAGE OBJECT
IMAGE OBJECT
IMAGE OBJECT
IMAGE OBJECT


ANATOMY OF ACHIEVEMENT


Page Title Goes Here


H2 LEVEL HEADING

Step 3: Configure pages and navigation

Step 3 displays all the pages that will be created when you complete the SiteAssist Professional wizard. Here you can customize the page type for each of the content pages, add or remove pages, and modify your site navigation.

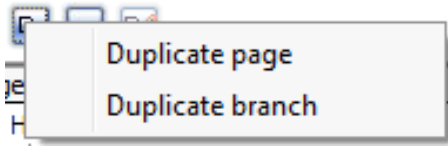
 : Adds a new document within the hierarchy. By default, the page type is Blank Page.


 : Deletes a selected page from the hierarchy.

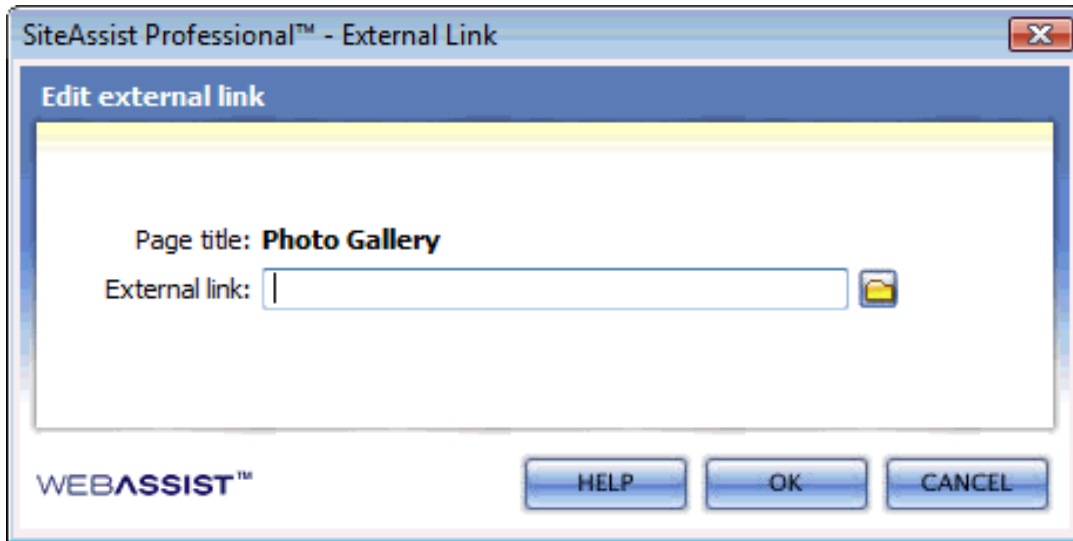
 : Adds a duplicate of the selected page within the hierarchy. If a branch (a page with subpages) is selected, choose either Duplicate page or Duplicate branch.

Duplicate page: Duplicates only the selected page and appends "copy" to the page name. All subpages are ignored.

Duplicate branch: Duplicates the entire branch, and appends "copy" to each page name.




 : Only available for page types that are external links. With a page of this type selected, this button opens a dialog that allows you to specify an external link:




This allows you to track an external link within the hierarchy and navigation of the site as an included page.

Note: An external link is one that is not managed by SiteAssist Professional; such a link can be within the defined Dreamweaver site or entered as an absolute URL. In this situation, SiteAssist Professional does not create a page.

 : Moves a selected page in the display up within the current hierarchy.

 : Moves a selected page in the display down within the current hierarchy.

 : Moves a selected page in the display left within the current hierarchy.

 : Moves a selected page in the display right within the current hierarchy.

To modify a page, select the page within the display pane. Once selected, you can modify the Page title and select a Page type. The Preview pane displays the layout for a selected Page type.

Note: If re-entering the SiteAssist wizard to modify your SiteAssist Professional site, all content will be lost on pages where the page

type has been changed.

CSS Menu Writer navigation menus: The primary navigation menus are generated based on the second tier of entries displayed in Step 3. For example, in the step illustrated here, the initial navigation items would be Manage Orders and Manage Products.

Note: Navigation menus available with each SiteAssist Professional preset layout can be customized using CSS Menu Writer, or by manually modifying the outputted CSS stored in the CSSMenuWriter folder. However, any changes made to the CSS Menu Writer CSS after creating your SiteAssist Professional site, will be overwritten if you choose to re-enter the SiteAssist Professional wizard.

SiteAssist Professional™ - Wizard

Step 3 of 5: Configure pages and navigation

Specify the pages for your site with their corresponding page types. Modify the site navigation by selecting a page and choosing Up, Down, Left or Right. To preview a chosen page type in a browser, click the preview image.

Site Structure

Page title	Page type
Home Page	Home Page
Manage Orders	Listing Pages > Banner abo...
Search Orders	Blank page
Order results	Blank page
Order detail	Detail Pages > Single item h...
Insert Order	Listing Pages > Banner abo...
Update Order	Blank page
Manage Products	Listing Pages > Banner abo...
Search Products	Blank page
Products Results	Blank page
Products Detail	Detail Pages > Single item h...
Insert Product	Blank page
Update Product	Blank page

Page title:

Page type:

- Calendars
 - Day planner
 - Traditional
- Detail Pages
 - Images above overv
 - Interactive gallery
 - Overview above det
 - Overview above full
 - Single item highlight
 - Text only
- Listing Pages
 - Banner above detail:

WEBASSIST™


HELP BACK NEXT CANCEL


Step 4: Configure site footer


Configure the pages linked within your site footer that are not included in your top level navigation. These pages are not displayed in the [previous step](#).

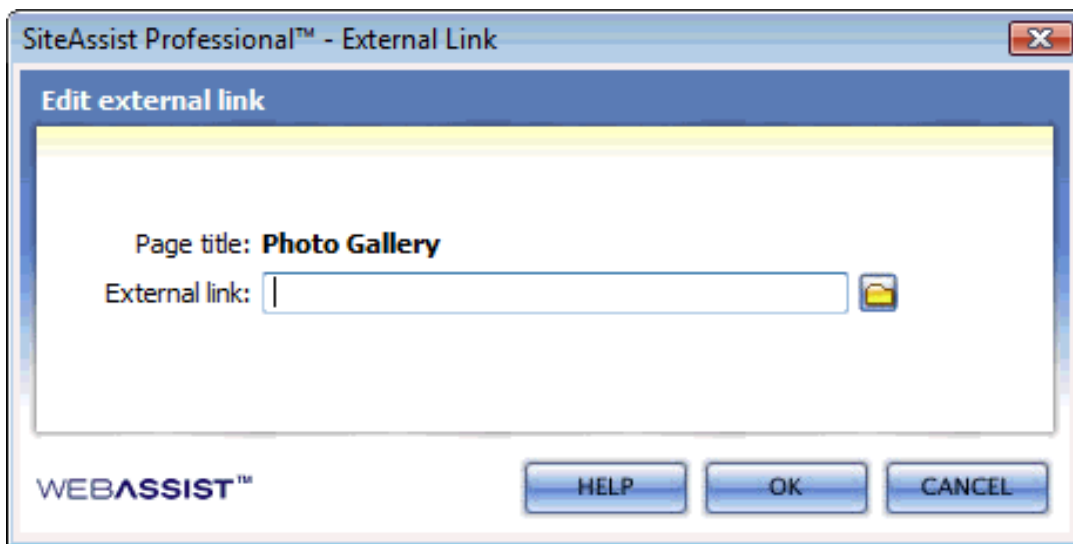
Specify the page title, type, and relative position for each page listed using the available controls:

 : Adds a new document within the hierarchy. By default, the page type is Blank Page.


 : Deletes a selected page from the hierarchy.

 : Adds a duplicate of the selected page.

 : Only available for page types that are external links. With a page of this type selected, this button opens a dialog that allows you to specify an external link:



This allows you to track an external link within the hierarchy of the site as an included page.

 : Moves a selected page in the display up within the current hierarchy.

 : Moves a selected page in the display down within the current hierarchy.

Each page listed will be included in the footer of the site. Each link will be separated using a character specified in the *Separator* field at the bottom of the user interface.

To modify a page, select the page within the display pane. Once selected, you can modify the Page title and select a Page type. The Preview pane displays the layout for a selected Page type.

Note: If re-entering the SiteAssist wizard to modify your SiteAssist Professional site, all content will be lost on pages where the page type has been changed.



Step 4 of 5: Configure site footer

Specify the pages for your site footer with their corresponding page types. Modify the site navigation by selecting a page and choosing Up or Down. To preview a chosen page type in a browser, click the preview image.

Footer



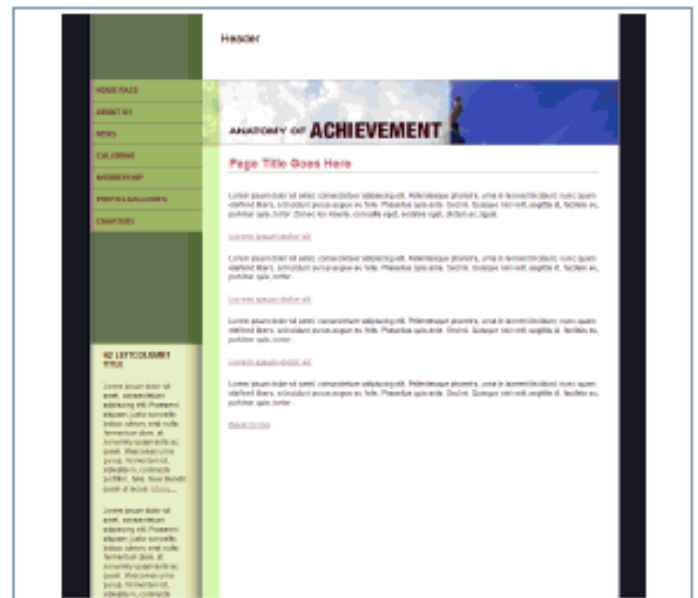
Page title	Page type
Resources	Listing Pages > Text only d...
Contact	Detail Pages > Text only
Sitemap	Sitemaps > Listing

Page title: Resources

Page type:

- | Page type |
|-----------------------|
| Calendars |
| Day planner |
| Traditional |
| Detail Pages |
| Images above overv |
| Interactive gallery |
| Overview above det |
| Overview above full |
| Single item highlight |
| Text only |

Separator: |




Step 5: Preset and Output options

The final step of the SiteAssist Professional wizard allows you to select the necessary output or preset options.

Placeholder & Comments

This section determines additional content that is added to the layout when the page is created. This includes placeholder content for the layout components of the page (header, footer, columns, headings, etc.). It also includes comments in the source code to assist in understanding how the CSS properties that are applied, control the layout and design of the page.



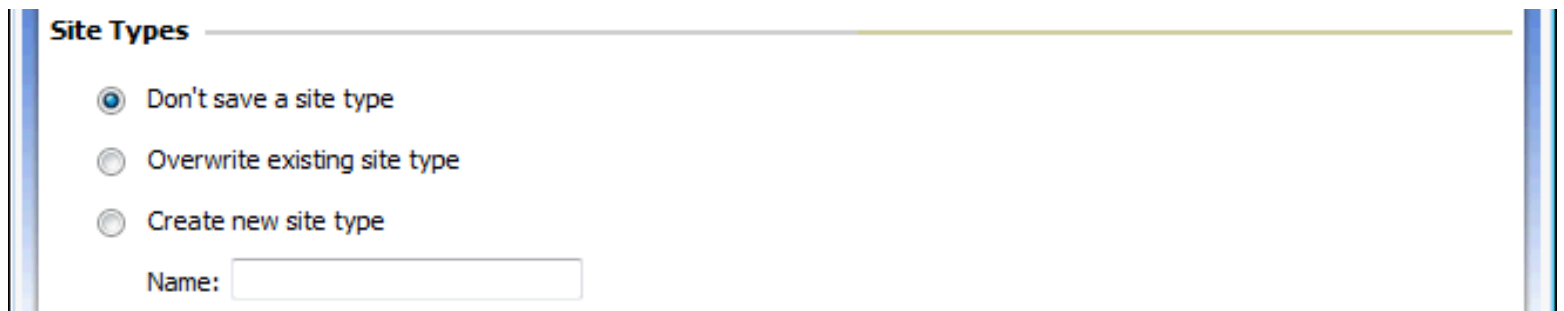
Placeholder content: Select the level of content that should be shown in each layout component when the page is created. Available options are:

- *Full:* When selected, includes the name of the layout component in the heading (h1), several lines of lorem ipsum style body text, as well as additional heading levels (h2, h3).
- *Minimal:* When selected, includes the name of the layout component in the heading (h1), and a single sentence of body text.
- *None:* When selected, no content is added to the layout components on the page.

Include CSS comments: When checked, adds comments specific to the layout components specified in the source code of the new page (i.e. body, container, header, content, column, footer). This includes general information on how the CSS properties determine how these components render.

Site Types

Site types relate to the page structure and page types used in a site. You can save the page structure and page types that you customized in steps 3 and 4, as a new site type that can be used in future sites.



The following options are available when determining if/how to save your current site type:

Don't save a site type: A new site type will not be created when finishing the SiteAssist Pro wizard.

Overwrite existing site type: This option overwrites the existing site type that was selected on step 1 of the SiteAssist Pro wizard.

Important: The site types installed with SiteAssist Professional are not protected and can be overwritten. Best practice is to provide a new name for a customized site type to avoid removing the original. Additionally, all original site types are uninstalled if the SiteAssist Professional extension is uninstalled for any reason. However, any new site types will be preserved when re-installing or updating the extension.

Optional: You can export your custom site types through the [Layout Manager](#), allowing you to copy them to a different machine or share with them with other SiteAssist Professional users.

Create new site type: Creates a new site type that is accessible in step 1 of the SiteAssist Professional wizard, and the [Layout](#)

[Manager](#). In the Name field, specify the name for the new site type.

Page Generation

This section determines the doctype tag applied to the top of the page, as well as if a new page is created upon completing configuration when a preset is being saved or overwritten.



The screenshot shows a window titled "Page Generation" with a horizontal line below the title. Below the line, there is a label "Doctype:" followed by a dropdown menu. The dropdown menu is currently set to "XHTML 1.0 Strict" and has a small downward-pointing triangle on the right side.

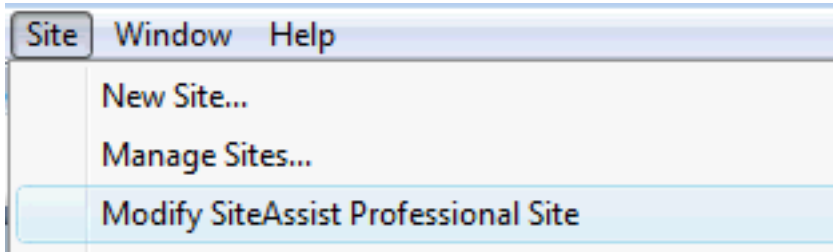
Doctype: Select the doctype tag that should be written to the top of the page. In most cases, XHTML 1.0 Strict is appropriate to use as your document type. More information regarding doctypes can be found in their specification at the W3C website, as linked next to each of the below options:

- XHTML 1.1 (<http://www.w3.org/TR/xhtml11/>)
 - XHTML 1.0 Strict (<http://www.w3.org/TR/xhtml1/>)
 - XHTML 1.0 Transitional (<http://www.w3.org/TR/xhtml1/>)
 - HTML 4.0.1 Strict (<http://www.w3.org/TR/html4/>)
 - HTML 4.0.1 Transitional (<http://www.w3.org/TR/html4/>)
-

Re-entering the SiteAssist Professional Wizard

After running through the SiteAssist Professional wizard and creating your pages, you can easily re-enter the wizard to make any necessary modifications.

- With your SiteAssist Professional site selected in the Dreamweaver Files panel, select **Site > Modify SiteAssist Professional Site**.



- Proceed through the SiteAssist Professional wizard to make any necessary changes. Since all options from the original run-through of the wizard are selected, the Finish button is available at any point during re-entry.

Note: The SiteAssist Professional wizard automatically opens at step 2, since options for step 1 cannot be changed on re-entry.

Important: If you have added new content to your SiteAssist Professional pages, you must be careful not to overwrite the content on re-entry. To avoid this, DO NOT change the page type in steps 3 or 4 of the SiteAssist Professional wizard on any pages which contain new content. For pages with new content where you need to change page type, it is recommended that you rename the current page with a new name before re-entering the SiteAssist Professional wizard. Content can then be copied over to the new page that will be created.

mystyles.css: SiteAssist Professional creates a my_styles.css style sheet that allows you to insert your own CSS styles to be applied to your pages. You can ensure that your new CSS is not overwritten when re-entering SiteAssist Professional, by storing them in this file.

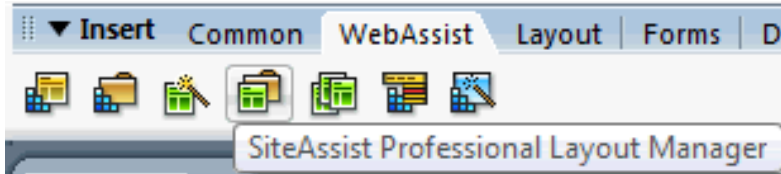
Layout Manager

The Layout Manager provides users with the ability to manage their existing and custom layouts, as well as create new layouts.

Access

The following locations in Dreamweaver open the Layout Manager.

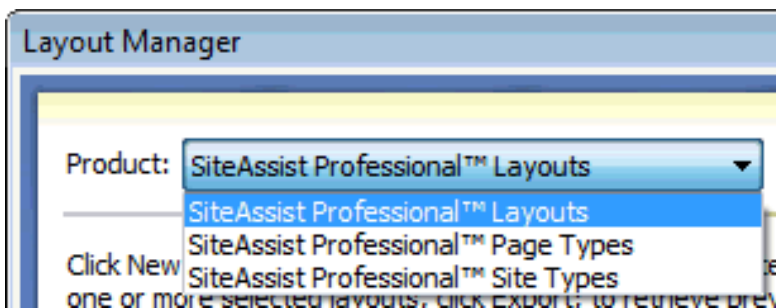
- From the WebAssist category of the Insert toolbar:



Insert > WebAssist > SiteAssist Professional > Layout Manager

From the Product menu list, choose from the following 3 SiteAssist Professional options:

- [SiteAssist Professional Layouts](#)
- [SiteAssist Professional Page Types](#)
- [SiteAssist Professional Site Types](#)



Layouts

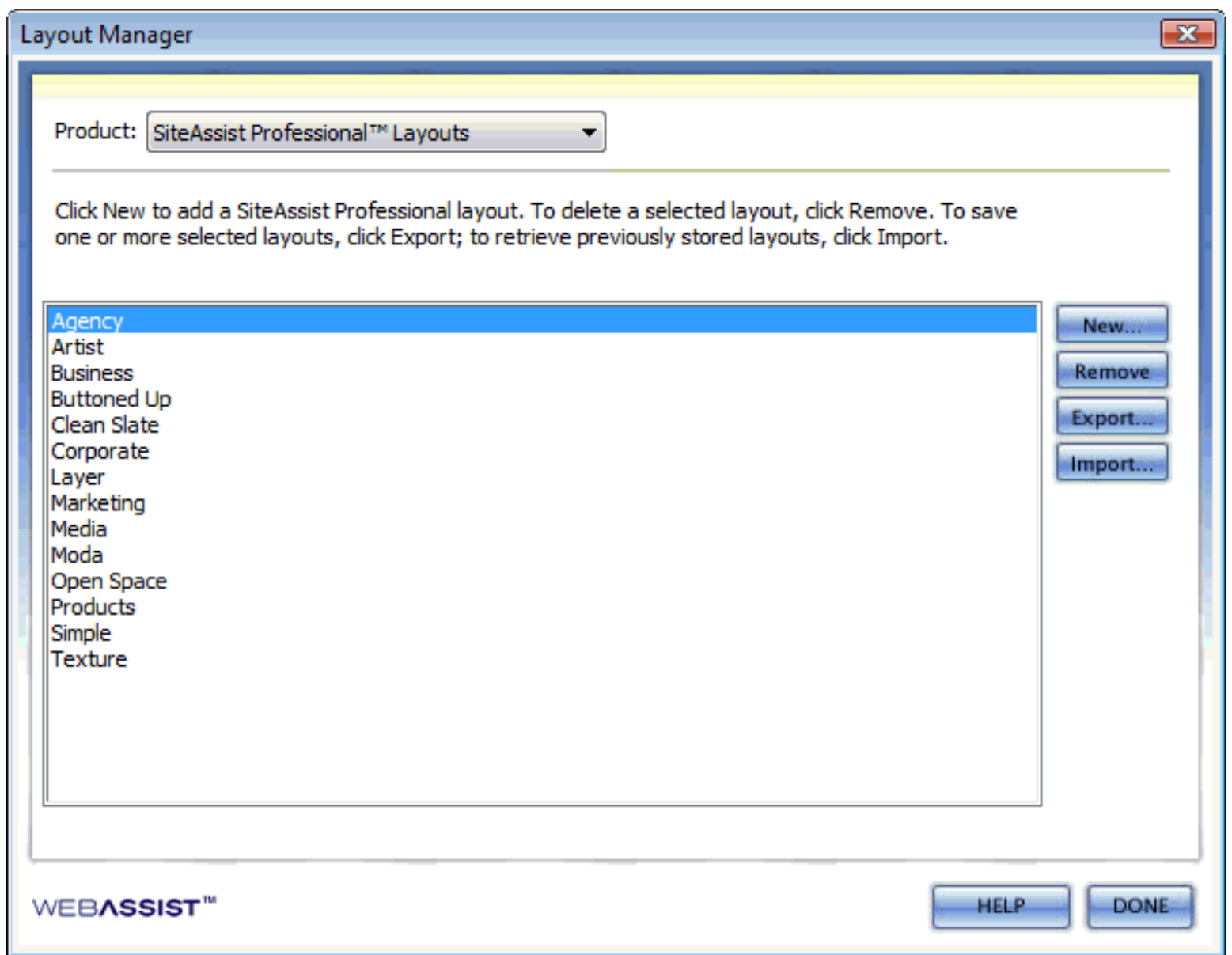
The SiteAssist Professional Layouts section allows you to manage the layouts you have installed in SiteAssist. By default, the only layouts that appear are those pre-installed with the SiteAssist professional extension.

New: Loads the SiteAssist Professional [Add New Layout wizard](#) allowing you to create custom layouts using Dreamweaver templates, CSS Sculptor templates, and CSS Menu Writer navigation menus.

Remove: Will remove the selected layout.

Export: Will export the selected layout to a .zip format for backup or importing onto a different machine using SiteAssist Professional.

Import: Allows you to select a SiteAssist Professional layout in .zip format for importing.



Page Types

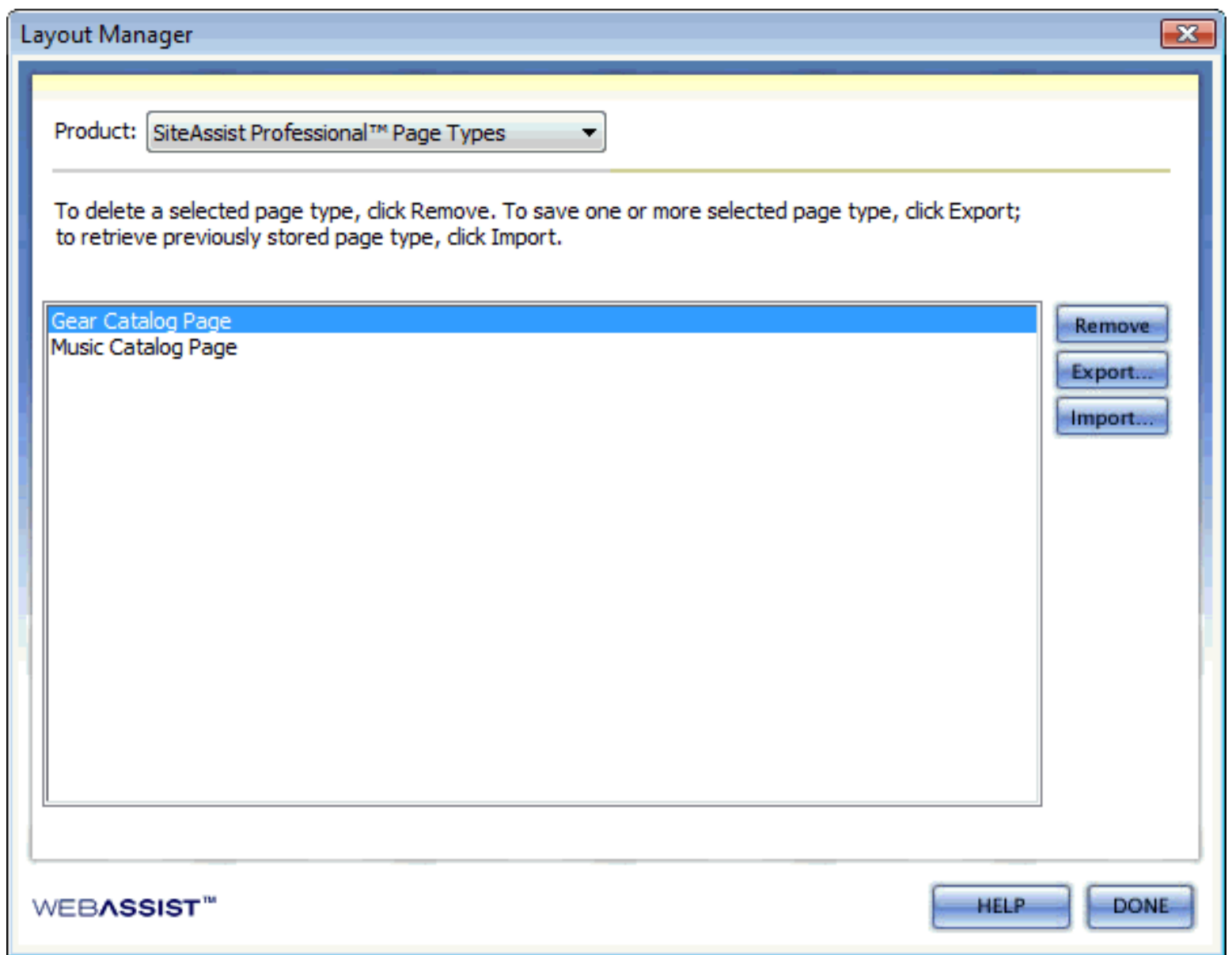
The SiteAssist Professional Page Types section allows you to manage the page types you have created in SiteAssist. By default, SiteAssist Professional does not contain pre-installed page types and this menu will display empty.

Note: Using the Create Page Type wizard, you can easily create new page types from any already created SiteAssist Professional page.

Remove: Will remove the selected page type.

Export: Will export the selected page type to a .zip format for backup or importing onto a different machine using SiteAssist Professional.

Import: Allows you to select a SiteAssist Professional page type in .zip format for importing.



Site Types

The SiteAssist Professional Site Types section allows you to manage the site types in SiteAssist. By default, the only site types that appear are those pre-installed with the SiteAssist professional extension. However, you can choose to save custom site types on the [last step](#) of the SiteAssist Professional wizard.

Remove: Will remove the selected site type.

Export: Will export the selected site type to a .zip format for backup or importing onto a different machine using SiteAssist Professional.

Import: Allows you to select a SiteAssist Professional site type in .zip format for importing.



Product: SiteAssist Professional™ Site Types

To delete a selected site type, click Remove. To save one or more selected site type, click Export; to retrieve previously stored site type, click Import.

Administrative: All
Administrative: Items
Administrative: Orders
Administrative: Visitors
Club - Association
Consultant Professional
Corporate
Education
Intranet
Medical Professional
Non-Profit
Online Store
Personal
Portfolio
Real Estate
Special Event

Remove

Export...

Import...

Creating New Layouts

Using the SiteAssist Professional Create New Layouts wizard, you can create a custom layout using the design and navigation of your choosing.

Each SiteAssist Professional layout is composed of a template or design created by Dreamweaver or Eric Meyer's CSS Sculptor, and a navigation menu created with CSS Menu Writer. Each layout has a different set of options for the home page and the content pages.

To access the Create New Layouts wizard, choose New from the SiteAssist Professional Layout Manager.

The wizard consists of 4 steps:

- [Specifying Home Page layout](#)
 - [Identifying Home Page regions](#)
 - [Specifying Content Page layout](#)
 - [Identify Content Page regions](#)
-

Identify Home page regions

Step 2 of 4 requires you to specify the CSS Menu Writer menu, and content region settings for your Home Page design.

Menu

- *CSS Menu Writer preset*: Allows you to select from any CSS Menu Writer preset.

Note: If CSS Menu Writer is not installed, you will only be able to select from the Menu Writer menus that are included in the SiteAssist Professional installation. CSS Menu Writer allows you to create customized CSS Menu navigation that you could use to create your SiteAssist Professional site.

- *Alignment*: Specify left or right alignment for your navigation menu.

Regions

- *Menu*: Specify the editable region or <div> element to insert your navigation menu.
- *Content*: Specify the editable region or <div> element to insert content.
- *Footer*: Specify the editable region or <div> element to insert your footer links.

Add New Layout ✕

Step 2 of 4: Identify Home Page Regions

Select a CSS Menu Writer or SiteAssist preset for the home page menu. Identify the regions in your home page layout that SiteAssist should use for your menu and content. Optionally, choose the region for your home page footer content. To preview your selections in a browser, click the preview image.

Menu

CSS Menu Writer preset:

Alignment:

Regions

Menu:

Content:

Footer:

Full Width Header

11 Home Content

Content Header

Content Body

WEBASSIST™ HELP ◀ BACK NEXT ▶ CANCEL

Specify Content Page Design

Step 3 of 4 requires you to specify the CSS Sculptor layout or Dreamweaver template to use for your Content pages design.

- *CSS Sculptor*: Allows you to select from any of the layouts currently in Eric Meyer's CSS SCULPTOR

Note: If CSS Sculptor is not installed, this option will be disabled.

- *Dreamweaver Template*: Allows you to select from any Dreamweaver template (.dwt) currently stored in the Templates folder of your currently selected defined site.

Note: A page must be opened from the defined site prior to opening the SiteAssist Professional Layout Manager, in order to select a Dreamweaver template.

Add New Layout

Step 3 of 4: Content Page

Select a CSS Sculptor preset or Dreamweaver template for the content page layout. To preview your selections in a browser, click the preview image.

Layout

CSS Sculptor
Choose a preset

Dreamweaver template
Choose a template

No Preview Available

WEBASSIST™

HELP ◀ BACK NEXT ▶ CANCEL

Identify Content Page Regions

Step 4 of 4 requires you to specify the CSS Menu Writer menu, and content region settings for your Content page's design.

Menu

- *CSS Menu Writer preset*: Allows you to select from any CSS Menu Writer preset.
Note: If CSS Menu Writer is not installed, you will only be able to select from the Menu Writer menus that are included in the SiteAssist Professional installation. CSS Menu Writer allows you to create customized CSS Menu navigation that you could use to create your SiteAssist Professional site.
- *Alignment*: Specify left or right alignment for your navigation menu.

Regions

- *Menu*: Specify the editable region or <div> element to insert your navigation menu.
- *Content*: Specify the editable region or <div> element to insert content.
- *Footer*: Specify the editable region or <div> element to insert your footer links.

Add New Layout

Step 4 of 4: Identify Content Page Regions

Select a CSS Menu Writer or SiteAssist preset for the content page menu. Identify the regions in your content page layout that SiteAssist should use for your menu and content. Optionally, choose the region for your content page footer. To preview your selections in a browser, click the preview image.

Menu

CSS Menu Writer preset: Choose a menu

Alignment: left

Regions

Menu: Choose a region

Content: Choose a region

Footer: Choose a region

Preview: Pub Middle Header

HELP BACK FINISH CANCEL

WEBASSIST™

Create page type

SiteAssist Professional allows you to create your own custom page types that can be used when building your sites.

In order to create a new page type follows these steps:

- Open a page in Dreamweaver that was created by SiteAssist Professional.
- Customize the page to appear as you would like the page type.
- Select **Insert > WebAssist > SiteAssist Professional > Create Page Type**.
- Enter name in Page Type field.
- Click OK.

