

## Incorporating the User Registration Solution Pack into your existing site

---

This document guides you through incorporating the pages included in the User Registration Solution Pack into your existing site.

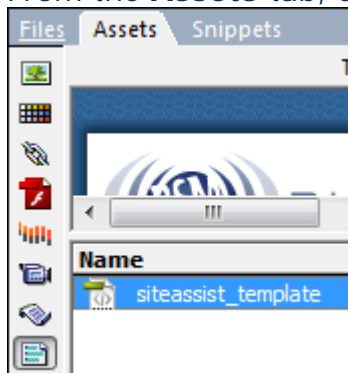
### What Do You Need to Start?

- Dreamweaver 8, CS3 or CS4 (*Optional*)
- User Registration Solution Pack

### Applying your template

Dreamweaver templates (.dwt) can easily be applied to the pages included in the User Registration Solution Pack. If you are using a Dreamweaver template, follow these steps for applying the template to these new pages.

1. Open a page from the User Registration Solution Pack in Dreamweaver.
2. From the **Assets** tab, choose the **Templates** option.



3. Right-click the .dwt file that you are using for your site.
4. Choose **Apply**.
5. Select the appropriate editable regions for each portion of your page.
6. Click **OK**.
7. Repeat this process for all other pages you wish to apply your template to.

### Modifying the email templates

Each of the three emails that are included in the User Registration Solution Pack can be full customized to suit your needs.

**Note:** When customizing the appearance of your emails, it is important to consider the various types of email applications and their different rendering capabilities.

The following three emails are included.

- **Registration email:** Automatically sent to a user upon registering
- **Verification email:** Sent to a user when selecting the Verify button.
- **Forgot password:** Sent to a user when selecting the Forgot Password button.

### **Registration**

The registration email is the first email received by your registered users after registering. This email contains a link that allows the user to verify their email address. It is likely that you will want to add additional content and styling to this email that instructs the user of what they can do now that they have registered with your site.

This page is located in the following location.

WA\_Universal\_Email > Email\_Templates > registration.php

### **Verification**

This email is the same as the registration email and simply contains a link to verify a user's email address. Once the link is selected by the user, the record for that user in your database will be updated..

This page is located in the following location.

WA\_Universal\_Email > Email\_Templates > verification.php

### **Forgot password**

This email is only sent to a user when they have entered their email address and selected the Forgot password link. This email simply contains the user's password.

This page is located in the following location.

WA\_Universal\_Email > Email\_Templates > lost\_password.php

## Integrating the pages into your site

Once you have incorporated your site's design to the User Registration pages, you may want to include navigation links to direct your users to these pages.

The following details the most common links that you may want to add to your site.

**Register:** In most cases, you will want a register link to display on all public pages.

**Log In:** A link on all public pages is often appropriate beside the Register link. Simply create a link to the users\_LogOut.php.

When a registered user accesses the users\_LogOut.php page, they will automatically be logged out of the system.

### Dreamweaver Users

Dreamweaver users who own [Validation Toolkit](#) can apply this link to a template, and specify a *show region if* server behavior that will only display the link if the visitor is logged into the site.

## Uploading to your site

Once you have made all the necessary changes to your User Registration Solution Pack you are ready to upload the files to your live web server.

### Updating the database connection file

Before pushing your files live, be sure to update the file located at Connections/localhost.php to refer to your live database.

Help accomplishing this task can be found in the *Updating the Database Connection file How To*.

### Uploading files

1. Copy all pages included with the User Registration Solution Pack to your live server.  
*All included files and folders must be uploaded together to maintain file organization and avoid creating broken links.*

**Note:** If you linked to any pages within the User Registration Solution Pack from other pages in your existing site, you will want to upload those pages as well. In most cases, uploading your entire site will be the most efficient procedure.