

CSS Sculptor 1.0 - Getting Started Guide

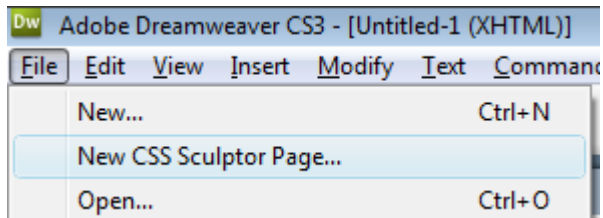
Eric Meyer's CSS Sculptor is a flexible, powerful tool for generating highly customized Web standards based CSS layouts. With CSS Sculptor, you can quickly create a cross-browser compatible layout with custom widths, margins, paddings, background images and more.

CSS Sculptor is comprised of two key interfaces: one for creating a new page and the other for managing preset layouts.

- Creating a Layout
- Managing Layouts

Each interface can be accessed in a variety of ways. You can begin to create a layout by any of these methods:

- Choose **File > New CSS Sculptor Page**.



- Choose **Insert > WebAssist > CSS Sculptor > New Page**.
- From the Insert bar, switch to the **WebAssist** category and click **New CSS Sculptor Page**.
- Right-click on any document tab and choose **New CSS Sculptor Page**.

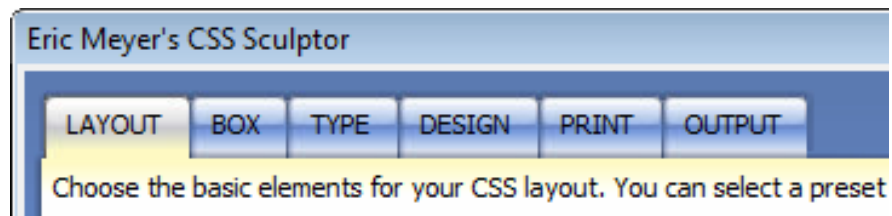
Likewise, the CSS Sculptor Layout Manager can be invoked in a number of ways:

- Choose **Insert > WebAssist > CSS Sculptor > Layout Manager**.
- From the Insert bar, switch to the **WebAssist** category and click **CSS Sculptor Layout Manager**.

Creating a Layout

CSS Sculptor creates a wide range of CSS-based layouts, all Web standards compliant and cross-browser compatible. With CSS Sculptor, you can customize your layout as much as you'd like and immediately output your layout complete with CSS styles for both screen and print.

The CSS Sculptor interface has six tabs. Each of the first 5 tabs controls a particular set of CSS properties for the page to be generated:



- **Layout** – Determines the initial layout of the page, either by choosing a preset layout or by selecting the layout elements manually, including the number of columns to use in the content area. The Layout tab also provides a series of design presets which control the basic color scheme. You also have the option of modifying the page structure on the Layout tab by changing the width, position, minimum width, and maximum width properties.
- **Box** – Sets the width and height of any layout component, as well as individual margin or padding values. The Box tab also provides a method for renaming the ID for any major <div> tag.
- **Type** – Use the Type tab to determine a wide range of properties for basic text, h1-h6 tags, and a series of pseudo-classes (link, visited, hover, focus and active). Properties available include font-family, font-size, color, decoration, and weight.
- **Design** – The Design tab makes it possible to define the full set of background and border properties for any layout component. You could, for example, add a background image to a header, set the repeat property to no-repeat and even position it horizontally and vertically.

- **Print** – Modifies your screen CSS settings to create a style sheet for print. Global settings allow you to quickly set all <div> tags to auto and colors to black and white—or you can change these settings individually for each layout component. You can also optionally hide or zero out margins and paddings for any area.

The final tab—Output—is used for defining the output options including the destinations for screen and print CSS styles (embedded or in an external style sheet), the degree of placeholder content and comments, and the creation or overwriting of a layout preset.

In the next section, you'll begin to use CSS Sculptor to create your layout structure.

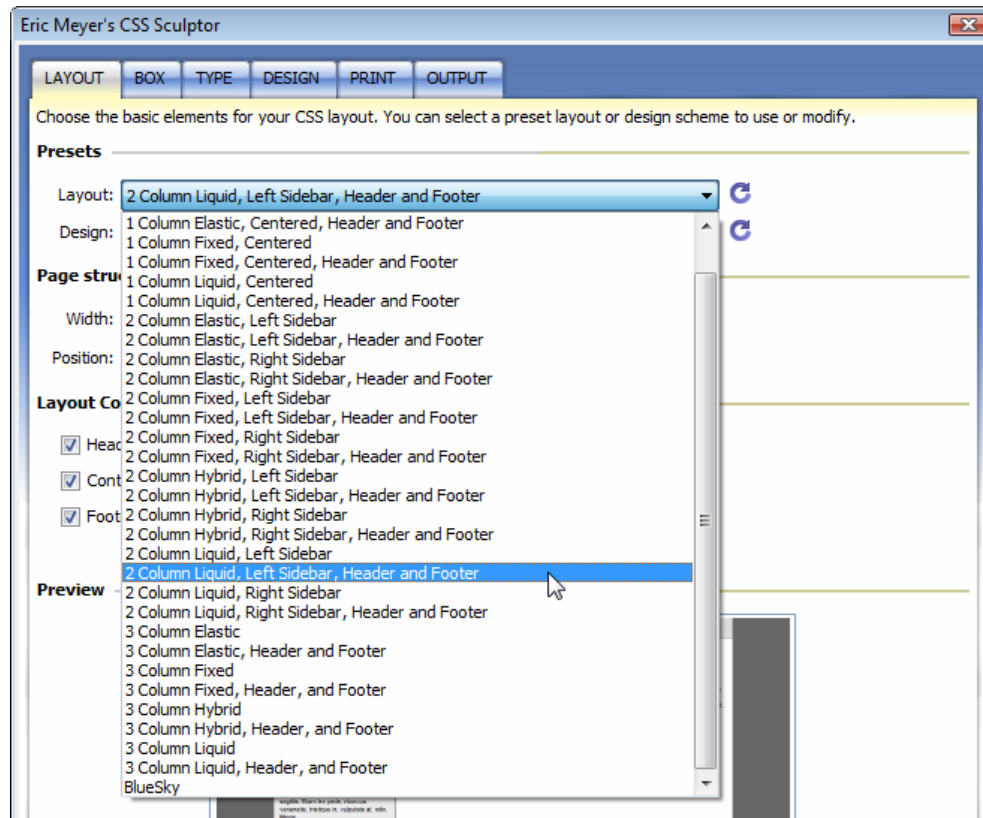
Choosing and modifying a preset layout

The first tab of CSS Sculptor, Layout, establishes the basic page structure. CSS Sculptor includes a collection of 30 different preset layouts to help you get started—or you can create your own. Any layout can be easily modified in a number of ways, including width and page position. Additionally, a second set of presets, Design, initially controls the overall look-and-feel of the layout.

Note: Throughout this Getting Started Guide, I'll choose a particular option or enter a set value. You're free to experiment on your own and try different options; however, the screen shots in the Guide may not match your choices.

To choose and modify a preset layout:

1. Open CSS Sculptor by one of the following methods:
 - Choose File > New CSS Sculptor Page.
 - Choose Insert > WebAssist > CSS Sculptor > New Page.
 - From the **Insert bar**, switch to the **WebAssist** category and click **New CSS Sculptor Page**.
 - Right-click on any document tab and choose **New CSS Sculptor Page**.
2. When CSS Sculptor opens, choose a preset from the **Layout** list. For this demonstration, I'll choose **2 Column Liquid, Left Sidebar, Header and Footer**.



Once you choose a preset, a number of CSS properties are populated with the associated values, some of which are visible in the Layout tab. If you just wanted to create a simple layout, you could, at this point, click Finish.

The preset layouts are divided into four different types:

- **Fixed** – Page and column widths are set with pixels and do not resize if the browser window or browser text size changes.
- **Liquid** – Page and column widths are set with percentages which allows them to resize when the browser window changes.
- **Elastic** – Page and column widths are set with ems which allows the columns to resize when the browser text size changes.
- **Hybrid** – Page widths are set with a percentage and columns with ems. This combination allows the overall page width to change as the browser window changes and the columns to change when the browser text size changes.

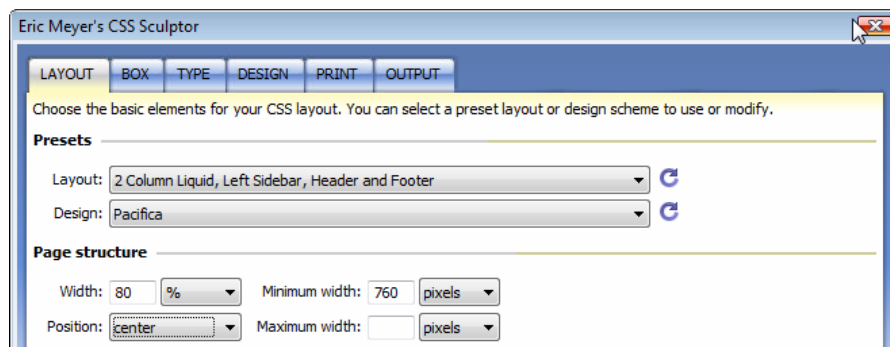
Note: While it's possible to create any common Web page layout from scratch within CSS Sculptor, it's much faster to start your

design with a preset layout. As you'll see later, you can easily save your own presets to select them as custom starting points.

3. If you want to work with an overall color scheme, choose an entry from the Design list. I'll select **Pacifica**.

The 11 color schemes in CSS Sculptor are also available in other WebAssist products like SiteAssist, DataAssist and SecurityAssist for a consistent look-and-feel.

4. As you can see in the Page structure section, the preset width for this layout is 80% and centered. Let's leave those values as is and add a minimum width. In the **Min Width** field, enter **760** and leave the unit list set to **pixels**.

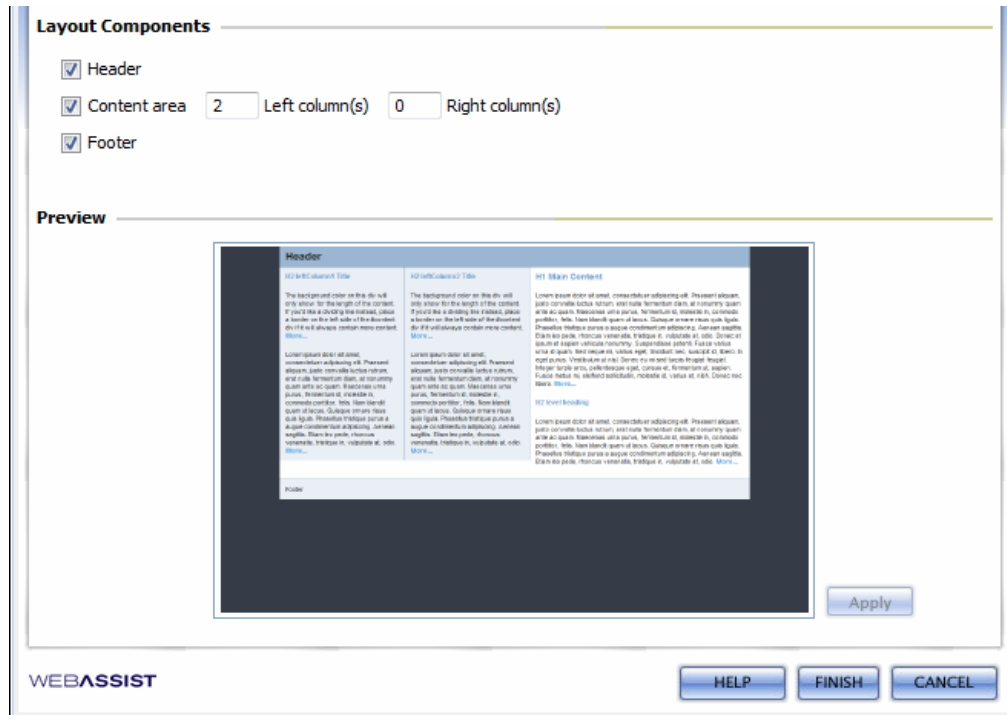


The min-width and max-width properties is a CSS 2.0 property and are not supported in older browsers (such as Internet Explorer 6), but do work in Firefox, Internet Explorer 7, and Safari, among others.

5. Let's try out the new setting. Click the **Preview** to display the layout in your primary browser. Change the width of your browser window to note how the layout remains centered and at 80% of the width of the window—until the window is less than 760 pixels wide. Close your browser and return to Dreamweaver.

One of the hallmarks of CSS Sculptor is its extreme flexibility. Let's explore this advantage in the Layout component section.

6. Change the **Left column** value to **2** and click **Apply** in the Preview area.



CSS Sculptor adds a new column to page as requested. If that's not exactly what you had in mind, you can change your mind.

Note: When you add a new column next to an existing column as we've done in the above step, CSS Sculptor picks up the properties of the existing column. If you add a new column where one did not exist before—by changing a column value from 0 to 1 or more—default column properties are used.

7. Change the **Left column** value back to **0**.

You don't have to click Apply to ensure that your layout has been changed, only if you want to preview the updates on the current tab. The preview is automatically updated when you switch from one tab to another.

CSS Sculptor is designed to be flexible and quick, so you can modify just the properties you want and click Finish at any point. You could, for example, click Finish here to create the existing page and accompanying CSS. However, there is so much more possible with CSS Sculptor; in the next section, you'll modify the basic box properties such as width and height as well as change the margin and paddings of individual layout components.

Adjusting the Box properties

The box, in CSS, is a basic building block. CSS Sculptor uses <div> tags for each layout component; each <div> tag has a unique ID, like header or footer. The Box tab in CSS Sculptor allows you to change the ID and various box-related properties (like margins and padding) for each layout component.

The Box tab also introduces a user interface element common to a number of the other tabs in CSS Sculptor, the layout tree. The layout tree shows each individual layout component used to structure the CSS for the page. In addition to the elements specified on the Layout tab, like content or header, a few other elements are displayed to make the CSS work properly. These additional elements include:

Layout Component	Width	Height	Margin	Padding
body			0 0 0 0	0 0 0 0
outerWrapper	80%		0 auto 0 auto	
header				10px 10px 10px 10px
contentWrapper				
leftColumn1	24%			10px 10px 10px 10px
content			0 0 0 26%	10px 10px 10px 10px

- **body** – The body tag is at the top of the layout tree and is made available to change margins and padding in the Box tab; in other tabs, select the body entry to specify a different overall font-family, text color or background color.
- **outerWrapper** – The outerWrapper encompasses all of the <div> tags used to construct the page. A common use of the outerWrapper is to center the layout by setting the left and right margins to auto.
- **contentWrapper** – As the name implies, the contentWrapper surrounds the main content area, including any columns. Select the contentWrapper when you want to modify properties for both content and column(s).

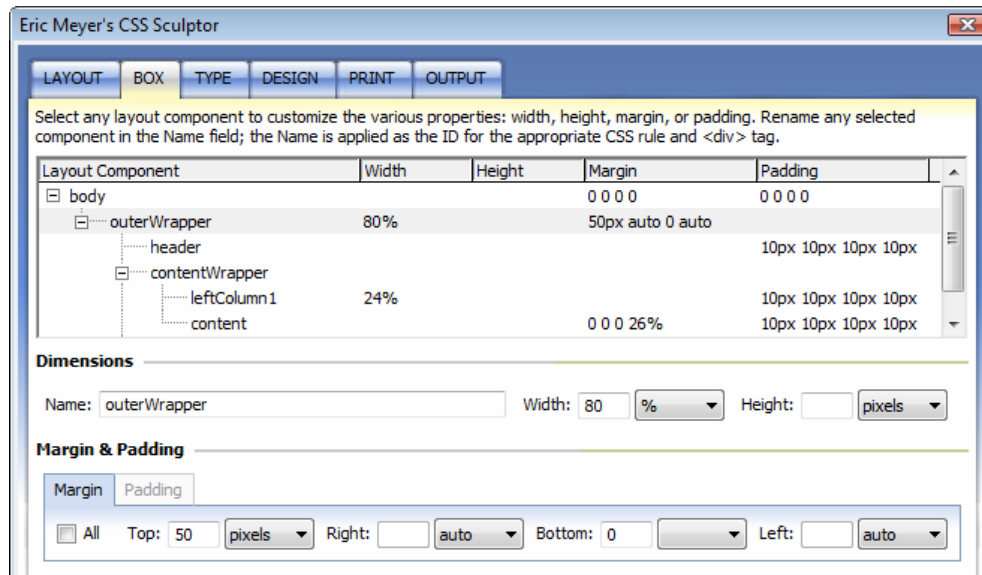
Because the layout tree displays the CSS structure properly, you can more easily get a sense of what elements are contained within each other. For example, if you collapse the contentWrapper entry in the example, you'll see just the core elements within the outerWrapper: header, contentWrapper, and footer.

To modify the Box properties:

1. From the layout tree, choose **outerWrapper**.

First, let's add a bit of space between the top of the browser window and the layout.

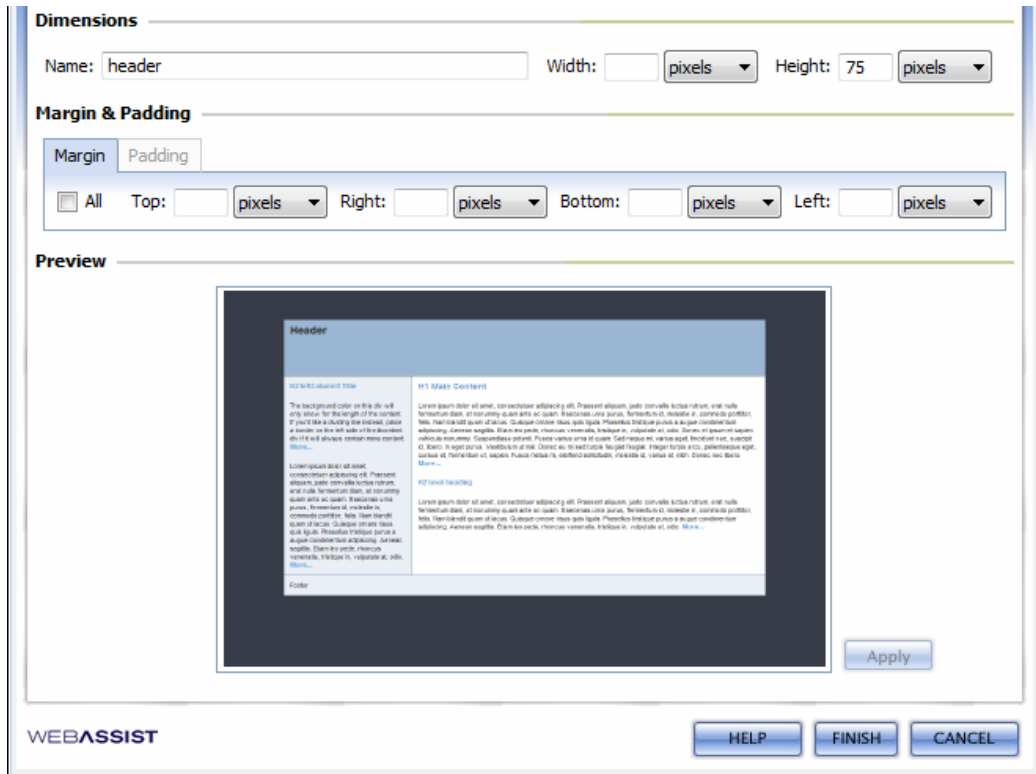
2. In the **Margin** subtab, make sure the **All** checkbox is deselected and enter **50** in the Top field and select **pixels** from the unit list.



Notice that the outerWrapper Margin column is updated in the tree control to read **50px auto 0 auto**. This is CSS shorthand that can be read “set the top margin to 50 pixels, the right to auto, the bottom to 0 and the left to auto.” CSS Sculptor uses proper CSS shorthand throughout the interface to tell you your settings at a glance.

A bit later in this exercise, you'll add a background logo to the header. To accommodate the image, let's expand the width of the header.

3. Select **header** from the layout tree and, in the **Height** field, enter **75** with **pixels** selected in the unit list. Click **Apply** to see the change in the Preview area.



The screenshot shows the 'Dimensions' section with 'Name' set to 'header', 'Width' set to 'pixels', and 'Height' set to '75 pixels'. Below this is the 'Margin & Padding' section with 'Margin' and 'Padding' subtabs. The 'All' checkbox is selected, and the 'Top', 'Right', 'Bottom', and 'Left' fields are all set to 'pixels'. A 'Preview' window shows a header element with a blue background and text. At the bottom, there are 'Apply', 'HELP', 'FINISH', and 'CANCEL' buttons.

You can also change the names of any layout component (except for the body tag).

- From the layout tree, select **leftColumn1**, change the **Name** field to **sidebar** and press Tab.

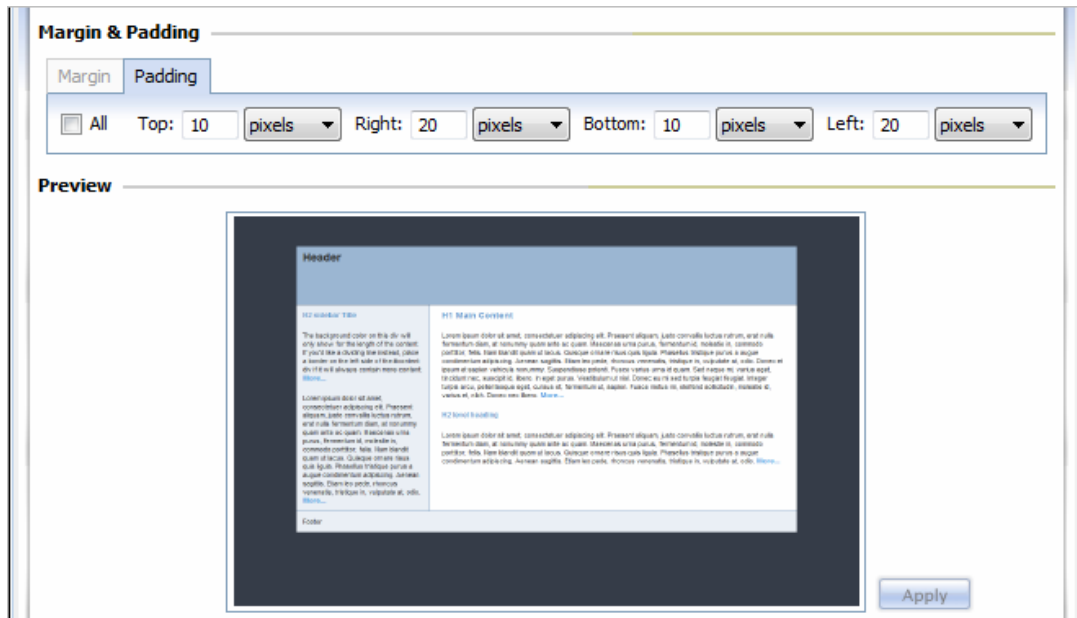
The `<div>` tag for the left column will now use an ID of sidebar. Now, let's customize content area a bit.

- From the layout tree, select **content**.
- Click the **Padding** subtab and deselect the **All** checkbox.

When the All checkbox is selected for either the Margin or Padding subtabs, the value in the first field controls the values for all fields. For example, with All selected, if you enter a 25 in the first Padding field (top), the remaining properties (right, bottom and left) will also be set to 25. Deselect the All box when you want to enter individual property values.

- Change both the **Left** and **Right** field values to **20**. Click **Apply** to update the preview.

The main content area now has a bit more white space on the left and right sides.



Next, you'll learn how you can customize the text for your layout in the Type tab.

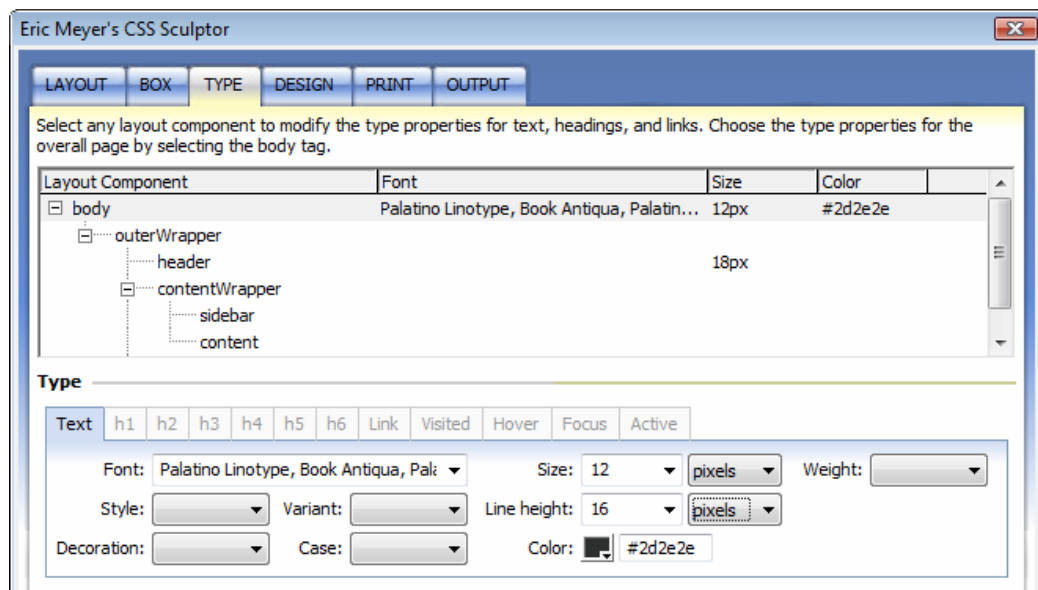
Setting the Type

Text plays a large role in the look-and-feel of any Web page. CSS Sculptor gives you the power you need to completely customize the font properties for standard paragraphs, headings and the various link states.

Note: CSS Sculptor includes a pseudo-element that is frequently omitted from the typical series of link states, `a:focus`. The `a:focus` pseudo-element is typically applied when a link receives focus in a browser, either by being clicked or tabbed to. The order of the link subtabs (link, visited, hover, focus, active) is significant and reflects the order in which the code is written.

To set the type properties:

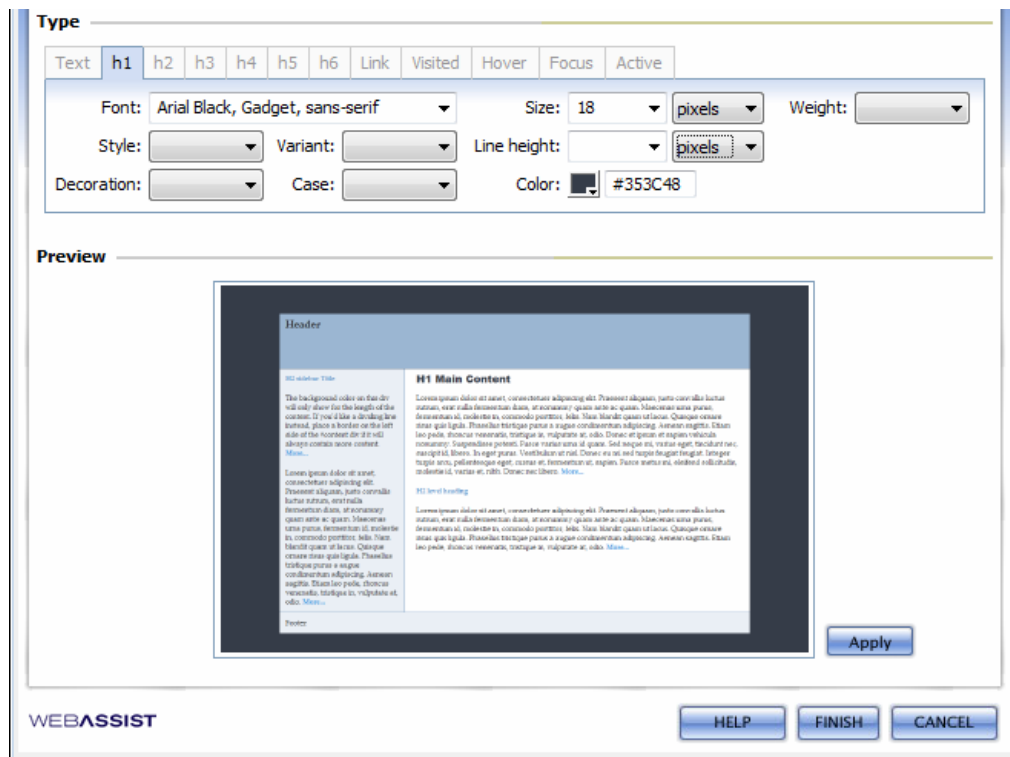
1. In the layout tree, select the **body** entry.
2. From the **Text** subtab, choose **Palatino Linotype, Book Antiqua, Palatino, serif** from the **Font** list.
3. In the **Size** field, enter **12** and, in the **Line Height** field, **16**. Click **Apply** and then click the preview image to see the changes in your browser. When you're done, close your browser and return to Dreamweaver.



You can also modify the text properties for a particular page area. Let's change the headings for just the main content.

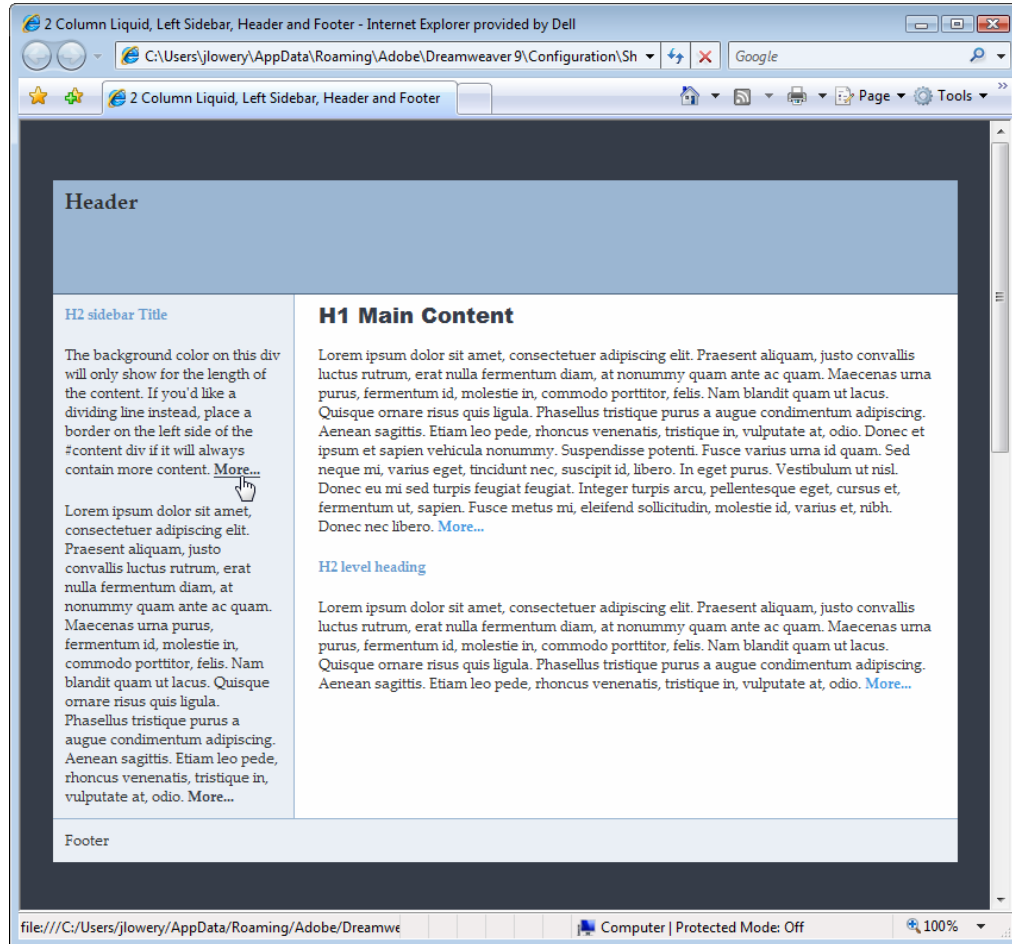
4. From the layout tree, select **content**.

- Click the **h1** subtab and, from the **Font** list, choose **Arial Black, Gadget, sans serif**. Set the **Size** field to **18** and then click the Color swatch. Use the eyedropper to sample the dark blue color surrounding the page in the preview—the hexadecimal value **#353C48** will appear in the **Color** field. Click **Apply** to preview the change.



You can also specify link properties.

- From the layout tree, select **sidebar**.
- Click the **Link** subtab and click the Color swatch. Again, use the eyedropper to sample the dark blue color surrounding the page in the preview so that the hexadecimal value **#353C48** appears in the **Color** field. Click the preview image to examine the links in your browser. Close the browser and return to Dreamweaver when you're done.



This particular design calls for an underline decoration on the hover state (set on the body tag). You could easily change that here if you liked.

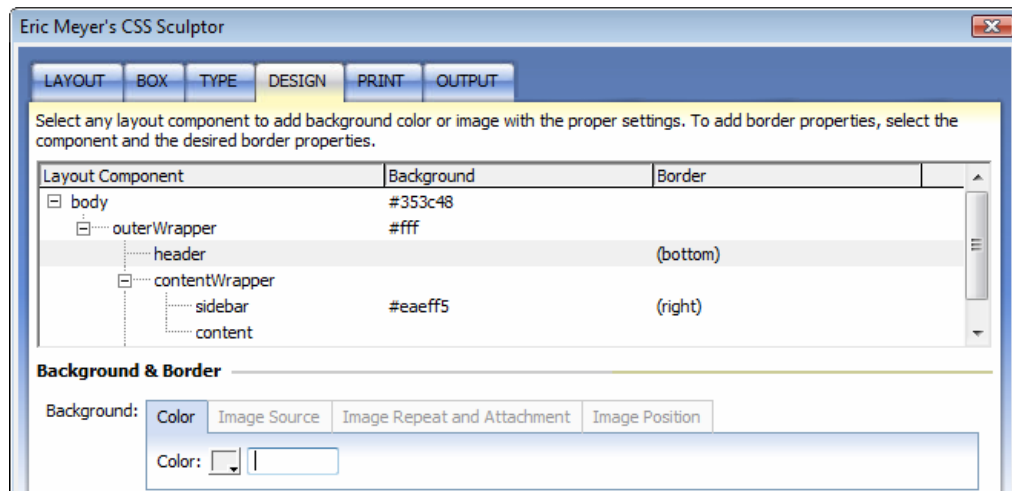
In the next section, you'll learn how to add background images and borders to any layout component.

Inserting Design elements

Background images and borders are integral to modern CSS layouts. CSS Sculptor makes it possible to add a background color and/or image, along with complete background properties to the body tag or any individual layout component. In addition, borders can be applied to surround any element or along any side.

To add a background image:

1. Click the **Design** tab.
2. In the layout tree, select **header**.
3. From the **Background Color** subtab, delete the hexadecimal entry in color field. Alternatively, you can click the color swatch and choose the Default Color icon.



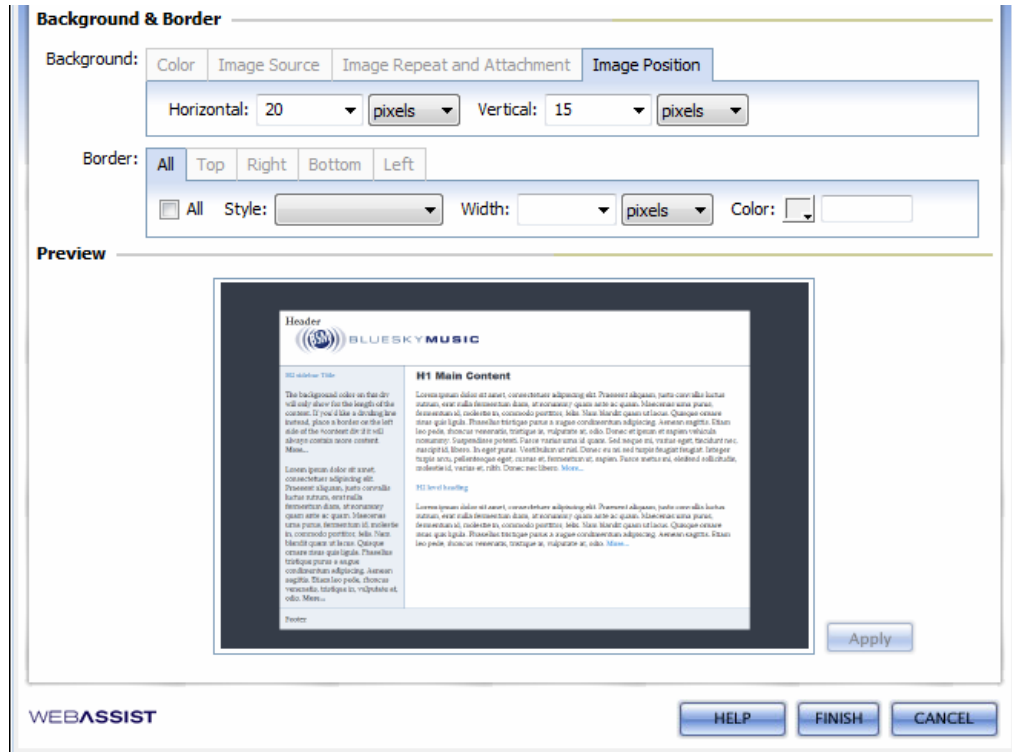
The background color is removed to allow the background image to show through.

4. Click the **Image Source** subtab.
5. Click the **Filename** folder icon and, when the Select Image Source dialog box opens, choose your file. For this demonstration, I'll choose the Blue Sky Music logo, which measures 160 x 71.

Because CSS Sculptor is working with an unsaved file, Dreamweaver will alert you that the file will be stored with the file path temporarily.

Note: If you are working with a site and select a file outside of the current site root, you'll be given an opportunity to copy your file to the current site.

6. If your image is not to be repeated, or not repeated along both horizontal and vertical directions, switch to the **Image Repeat** and **Attachment** subtab and choose the desired option from the **Repeat** list. For this demonstration, I'll choose **no-repeat**.
7. To position your image within the containing element, click the **Image Position** tab. Here, I'll set the **Horizontal** field to **20 pixels** and the **Vertical** field to **15 pixels**.



Background & Border

Background: Color Image Source Image Repeat and Attachment **Image Position**

Horizontal: 20 pixels Vertical: 15 pixels

Border: All Top Right Bottom Left

All Style: solid Width: 1px Color: black

Preview

Header

BLUESKYMUSIC

H1 Main Content

The background color on this site will only show for the length of the course. If you'd like a striking new look, please contact us at the left side of the footer for it. It will always contain more content. More...

More...

Footer

Apply

WEBASSIST

HELP FINISH CANCEL

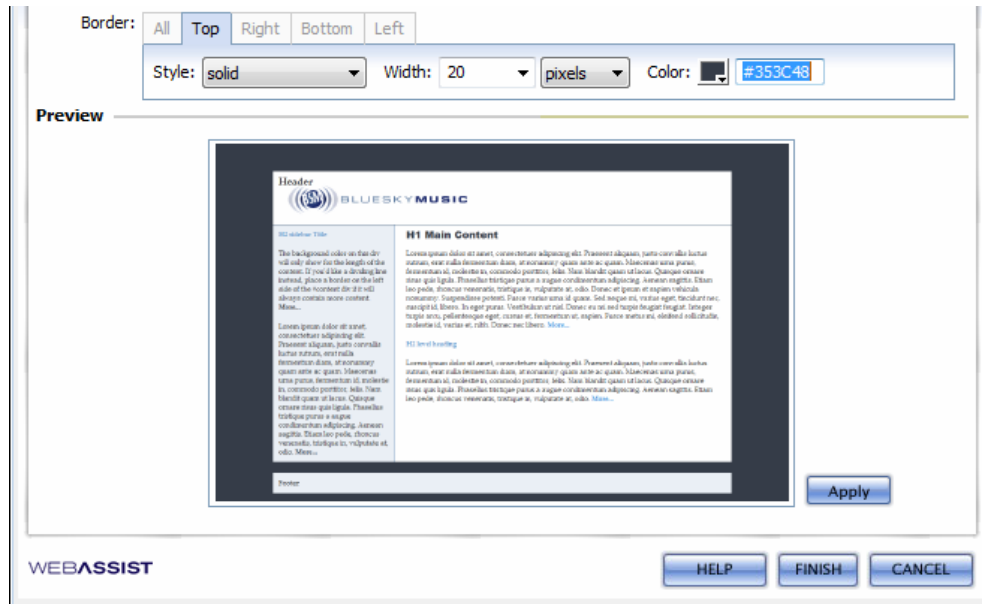
8. Click **Apply** to preview the changes.

Let's give the footer a more distinct, separated appearance by applying a thick border.

To apply a border:

1. From the layout tree, choose **footer**.
You'll need to scroll down the layout component pane to locate footer.
2. In the Border area, make sure that the **All** checkbox is not selected and click the **Top** subtab.

- Leave the **Style** list set to **solid** and change the **Width** field to **20 pixels**. Click the color swatch and use the eyedropper to sample the background color surrounding the layout in the preview so that the Color field contains the hexadecimal value **#353C48**.



- Click **Apply** to preview the changes.

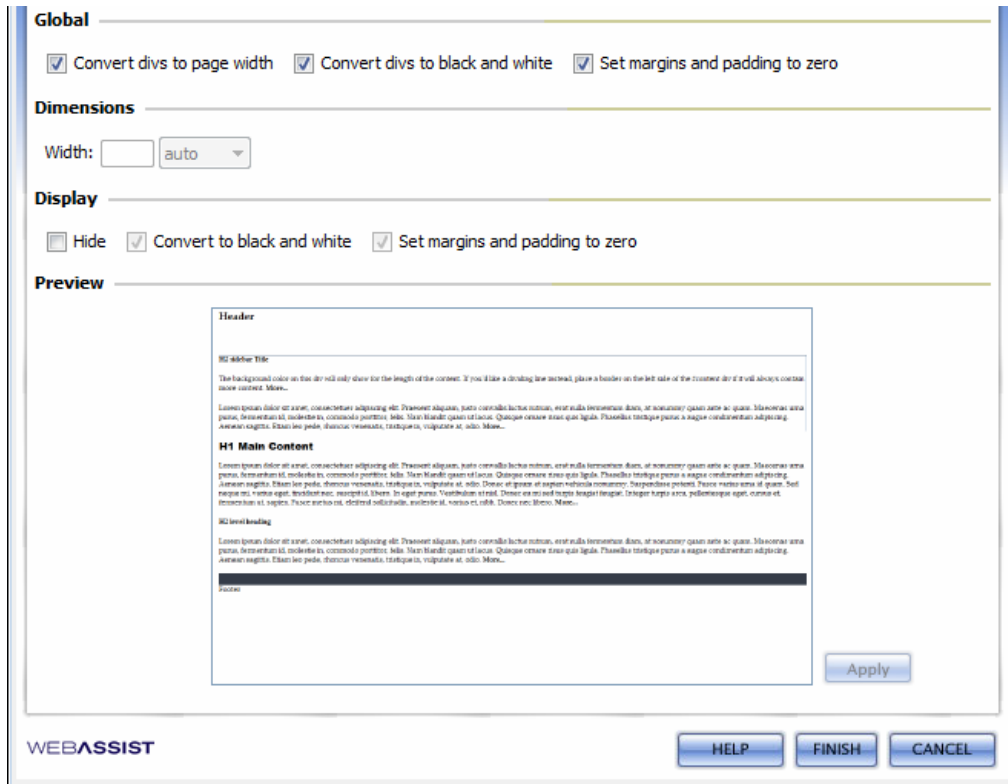
Your screen style are now complete. In the next step, you'll define the styles for a print style sheet.

Crafting the Print style sheet

Modern browsers render the print style sheet when the Print Preview or Print command is issued. Many designers attempt to optimize their print style sheets for the more suitable print format, which typically expands the divisions to full width and reduces the color scheme to black and white. Additionally, certain areas – such as those which contain linked navigation – are hidden. CSS Sculptor allows you to set up such a style sheet quickly and easily.

To create a print style sheet:

1. Click the **Print** tab.
2. In the Global section, click the **Convert divs to page width** checkbox, the **Convert divs to black and white** checkbox, and the **Set margins and padding to zero** checkbox. Click **Apply** to preview the changes.



Global

Convert divs to page width Convert divs to black and white Set margins and padding to zero

Dimensions

Width: auto

Display

Hide Convert to black and white Set margins and padding to zero

Preview

Header

H2 header title

The background color on this div will only show for the length of the content. If you like a dividing line instead, place a border on the left side of the container div if it will always contain some content. More...

Lorem ipsum dolor sit amet, consectetur adipiscing elit. Praesent aliquam, justo convello luctus rutrum, erat nulla lorem ipsum, diam, at nonummy quam ante ac quam. Mollis eros ante porta, fermentum id, molestie in, commodo porttitor. Ine. Nam blandi quam ut lacus. Quisque ornare eros qui ligula. Praesent tristique porta a sagittis condimentum adipiscing. Aenean sagittis. Etiam leo pede, ibanctus venenatis, tristique in, vulgare ac, odio. More...

H1 Main Content

Lorem ipsum dolor sit amet, consectetur adipiscing elit. Praesent aliquam, justo convello luctus rutrum, erat nulla lorem ipsum, diam, at nonummy quam ante ac quam. Mollis eros ante porta, fermentum id, molestie in, commodo porttitor. Ine. Nam blandi quam ut lacus. Quisque ornare eros qui ligula. Praesent tristique porta a sagittis condimentum adipiscing. Aenean sagittis. Etiam leo pede, ibanctus venenatis, tristique in, vulgare ac, odio. More...

H2 level heading

Lorem ipsum dolor sit amet, consectetur adipiscing elit. Praesent aliquam, justo convello luctus rutrum, erat nulla lorem ipsum, diam, at nonummy quam ante ac quam. Mollis eros ante porta, fermentum id, molestie in, commodo porttitor. Ine. Nam blandi quam ut lacus. Quisque ornare eros qui ligula. Praesent tristique porta a sagittis condimentum adipiscing. Aenean sagittis. Etiam leo pede, ibanctus venenatis, tristique in, vulgare ac, odio. More...

Footer

Apply

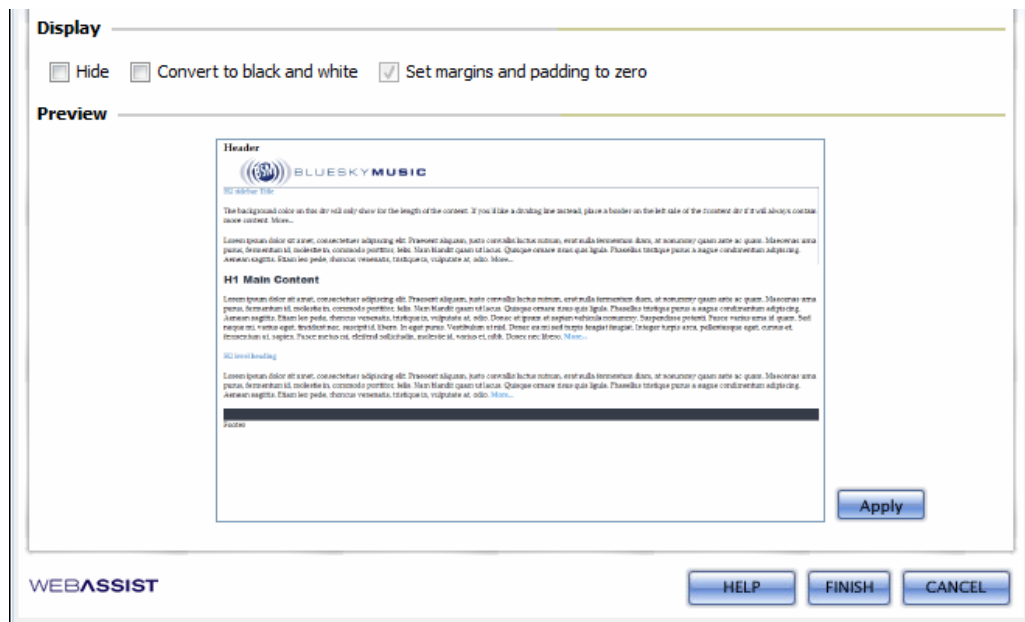
WEBASSIST **HELP** **FINISH** **CANCEL**

CSS Sculptor applies the most commonly expected print changes to all layout components. Let's say, however, you want to display the logo that is in the header area. CSS Sculptor gives you the option to make your changes not quite global.

- In the Global section, deselect the **Convert divs to black and white** checkbox.

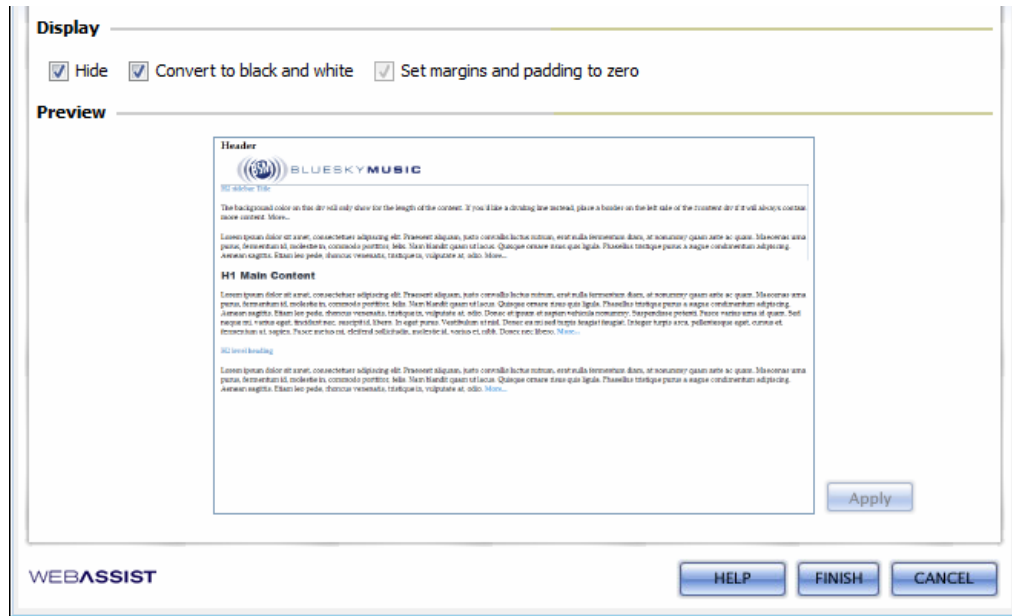
This action re-enables the Convert the black and white option in the Display section which allows individual layout components to be restored to color.

- In the layout tree, select **header**.
- In the **Display** section, uncheck the **Convert the black and white** checkbox. Click **Apply** to preview the changes.



It's just as easy to hide a section of the page.

- In the layout tree, select **footer**.
- In the **Display** section, select the **Hide** checkbox. Click **Apply** to preview the changes.



Note: If you click the preview image, the page will display as shown in the Print tab preview pane and not as the screen style sheet is defined. To see the print style sheet in its intended usage, you'll need to click Finish and preview the page in Dreamweaver using the Style Rendering toolbar or through your browser's Print Preview command.

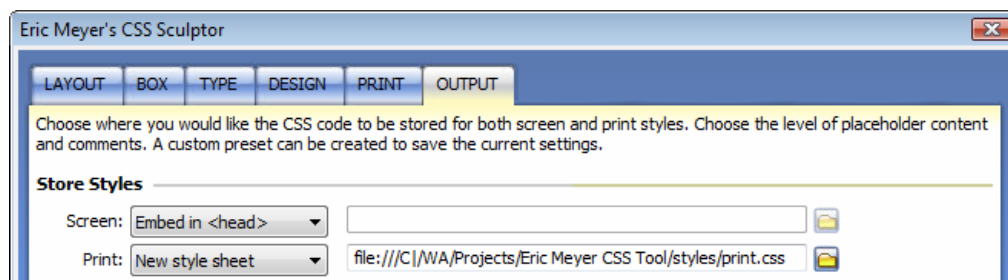
With both screen and print styles defined, it's time to establish your output options.

Determining output options

The final tab of CSS Sculptor gives you control over the resulting documents and the option to save your preset. Your CSS code—for either screen or print—can be stored however you prefer: embedded in the HTML page, as a new style sheet or incorporated into an existing style sheet. Other options include the ability to set a doctype for the HTML page, determine the amount of placeholder content, and include or omit CSS comments. Another key feature is the ability to save a new preset or overwrite the current one. This makes it easy to quickly re-generate layouts with minor or major changes.

To set the output options:

1. Click the **Output** tab.
2. Choose where you'd like to store your CSS screen styles from the **Screen** list. For this exercise, I'll choose **Embed in <head>** to maintain the styles in the HTML page.
3. Choose where you'd like to store your CSS print styles from the **Print** list. I'll choose New Style Sheet and click the folder icon to pick a folder location and file name in my site.



4. To set the amount of placeholder content to include in your generated layout, choose one of the options from the Placeholder list:
 - **Full** – Includes full lorem ipsum style placeholder text as displayed in the CSS Sculptor previews.
 - **Minimal** – Applies one sentence for each div. For example, "Content for header div goes here."
 - **None** – Removes all placeholder content.

For this demonstration, I'll keep the **Placeholder** option at **Full**.

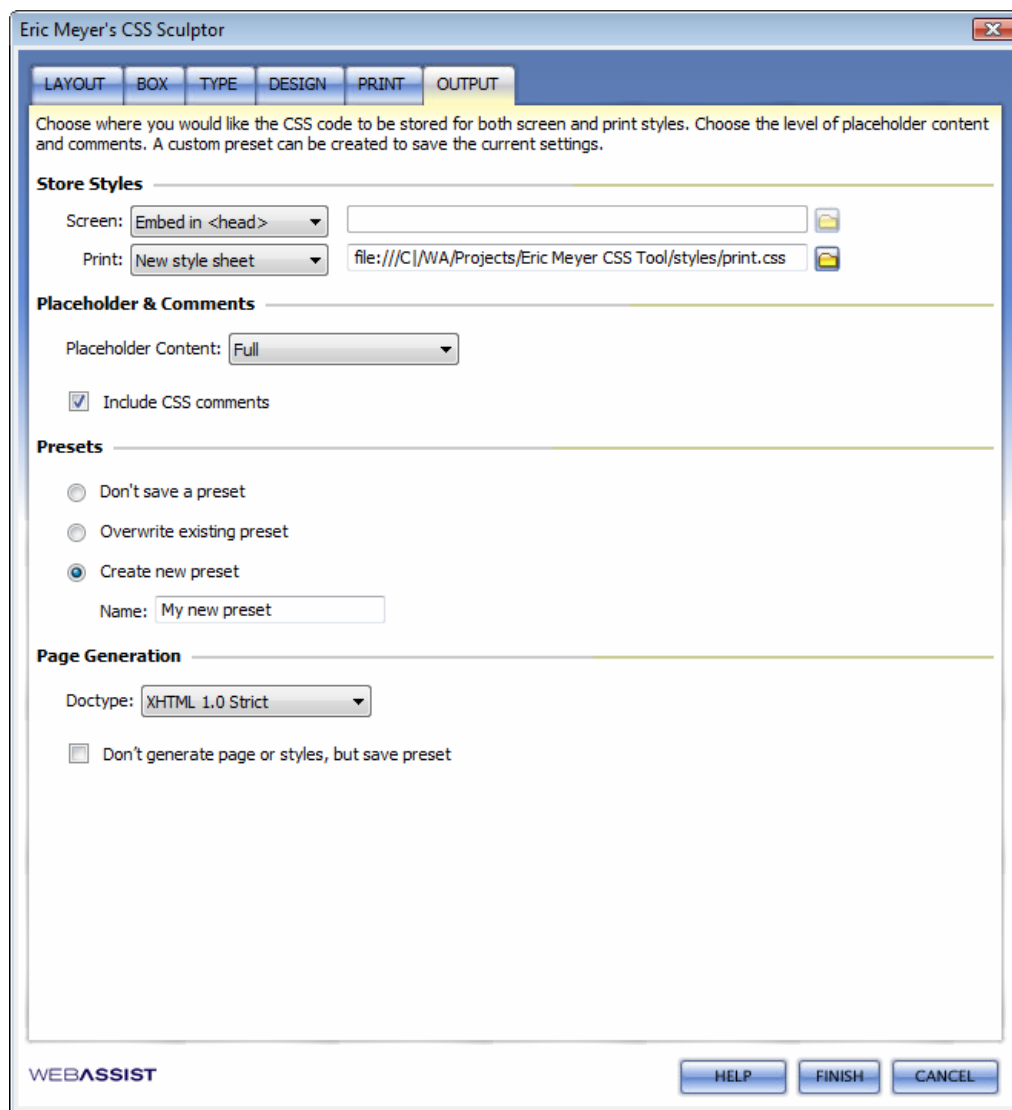
5. If you'd like to remove comments from your CSS code, deselect the **Include CSS comments** checkbox.

6. In the Page Generation section, choose your doctype from the Doctype list. The default is XHTML 1.0 Strict.

The **Don't generate page or styles, but save preset** option is useful when creating a library of presets or editing an existing preset where no page is needed immediately.

To save a preset:

1. In the Presets section, select the **Create new preset** option.
2. Enter the name of your new preset in the **Name** field.



The screenshot shows the 'Eric Meyer's CSS Sculptor' dialog box with the 'OUTPUT' tab selected. The dialog is divided into several sections:

- Store Styles:** Contains two rows. The 'Screen' row has a dropdown menu set to 'Embed in <head>' and an empty text field. The 'Print' row has a dropdown menu set to 'New style sheet' and a text field containing the file path 'file:///C:/WA/Projects/Eric Meyer CSS Tool/styles/print.css'.
- Placeholder & Comments:** Contains a 'Placeholder Content' dropdown menu set to 'Full' and a checked checkbox labeled 'Include CSS comments'.
- Presets:** Contains three radio button options: 'Don't save a preset', 'Overwrite existing preset', and 'Create new preset'. The 'Create new preset' option is selected. Below these options is a text field labeled 'Name:' containing the text 'My new preset'.
- Page Generation:** Contains a 'Doctype:' dropdown menu set to 'XHTML 1.0 Strict' and an unchecked checkbox labeled 'Don't generate page or styles, but save preset'.

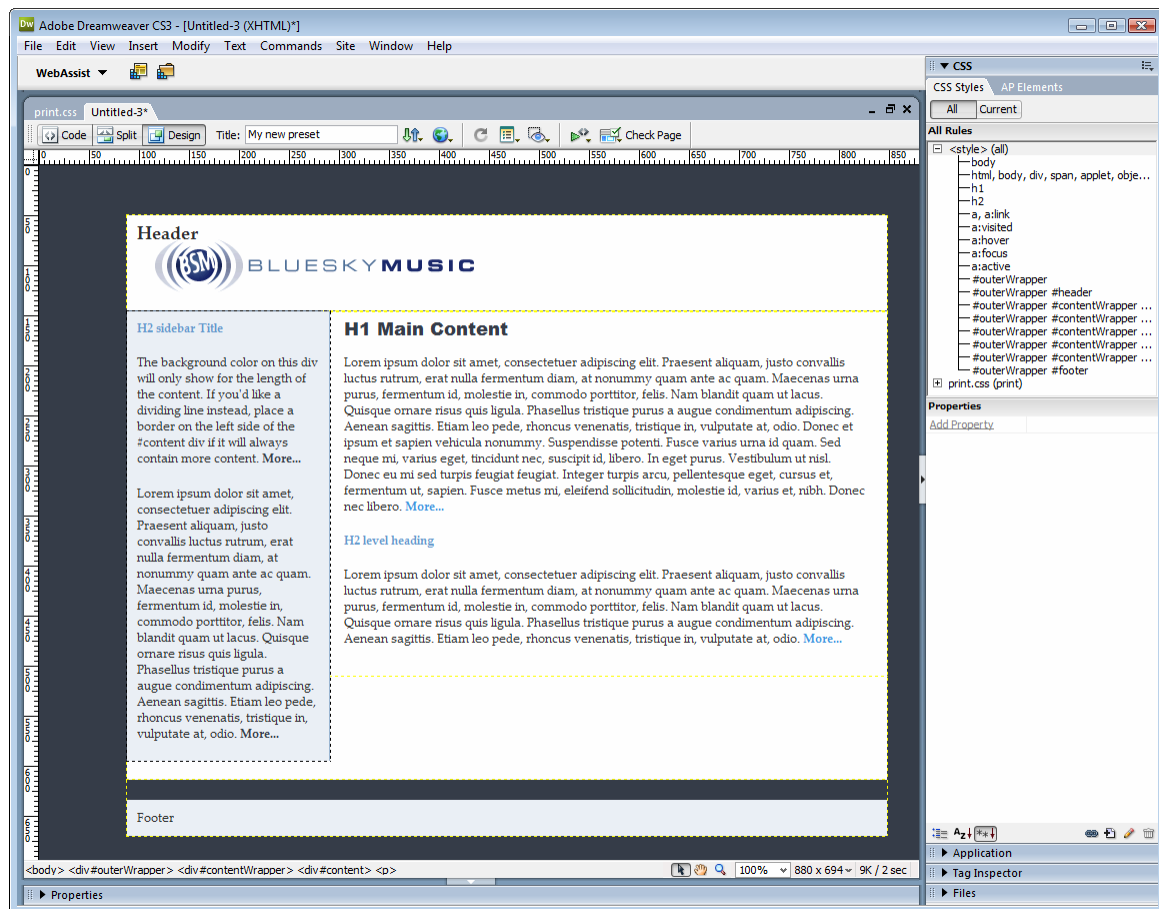
At the bottom of the dialog, there are three buttons: 'HELP', 'FINISH', and 'CANCEL'. The 'WEBASSIST' logo is visible in the bottom left corner.

Generating the layout

Once you've defined your layout, there's just one step left:

1. Click **Finish**.

The layout is generated in HTML and opened in Dreamweaver. You can either save the page as a standard HTML page, a dynamic page or a template. If you chose to store your styles in an external style sheet, that style sheet is created, saved and opened as well.



Note: Once the page is generated, you cannot re-open it with CSS Sculptor; you can, however, create a new layout based on a saved preset.

Now you're ready to begin replacing the placeholder content with your own and further customizing the CSS if desired.

In the next section, you'll learn how to manage your presets with the CSS Sculptor Layout Manager.

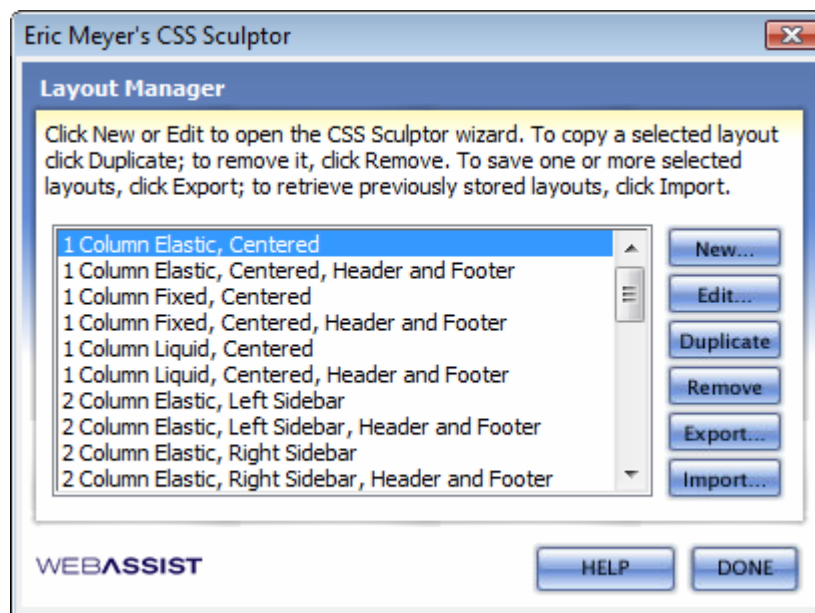
Managing Layouts

CSS Sculptor's ability to save new and modified presets presents a number of workflow opportunities for the Web professional. A designer may build up their own library of common layouts to be reproduced at will, complete with background images and preferred margins. To facilitate your efforts, CSS Sculptor includes the CSS Sculptor Layout Manager.

You can access the CSS Sculptor Layout Manager in either of these ways:

- Choose **Insert > WebAssist > CSS Sculptor > Layout Manager**.
- From the Insert bar, switch to the **WebAssist** category and click **CSS Sculptor Layout Manager**.

Once opened, the Layout Manager is populated with a list of all available preset layouts.



There are six commands available in the Layout Manager:

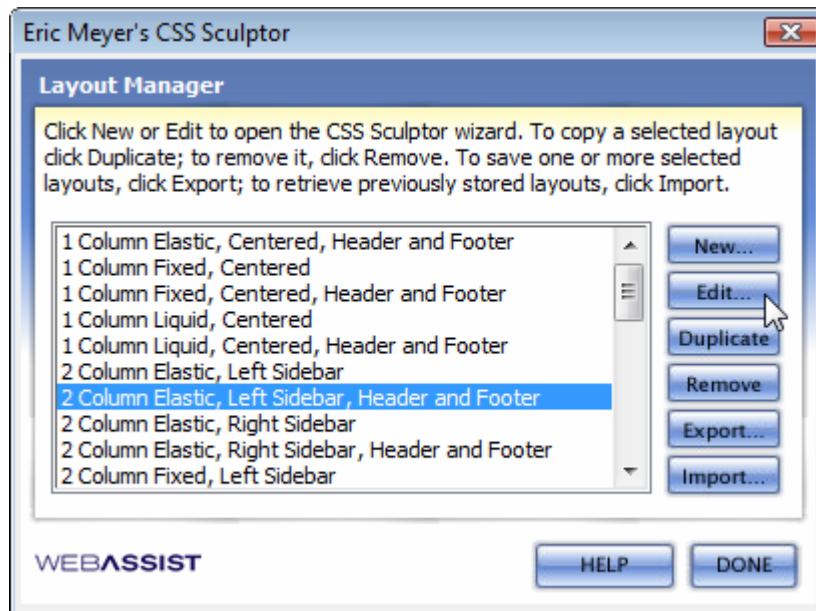
- **New** – Opens the CSS Sculptor interface.
- **Edit** – Opens the CSS Sculptor interface with the selected layout pre-loaded and available for modification.
- **Duplicate** – Duplicates any selected layouts within the Layout Manager and makes them available for editing and other operations.

- **Remove** – Deletes any selected layouts from the Layout Manager.
- **Export** – Exports an XML file with the information for the selected layouts.
- **Import** – Imports an XML file exported from Layout Manager and makes the included layouts available for use with CSS Sculptor.

To edit an existing layout:

1. Open the CSS Sculptor Layout Manager using one of the methods described above.
2. Select any listed layout.

The Edit button is inactive unless a single layout is selected.



3. Click **Edit**.

CSS Sculptor opens with the chosen layout pre-selected and the Layout list is inactive.

4. Make any modifications desired to the layout.
5. In the Output tab Presets section, choose the desired preset option:
 - **Don't save a preset** – Generates the layout without making any changes to the preset layout.
 - **Overwrite existing preset** – Modifies the selected layout to include the modifications.

- **Rename existing preset** – Saves a new preset with the specified name.



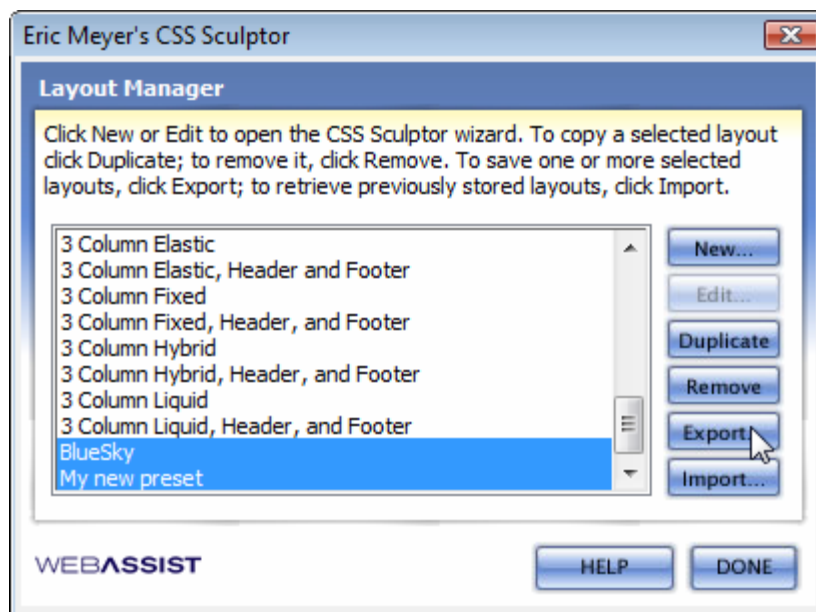
6. Click **Finish**.
7. Choose another layout to edit or choose **Done**.

To export layouts:

8. In the CSS Sculptor Layout Manager, select one or more layouts.

You can make a multiple selection by pressing Ctrl (Windows) or Cmd (Mac) while clicking on entries or you can shift-select for contiguous entries.

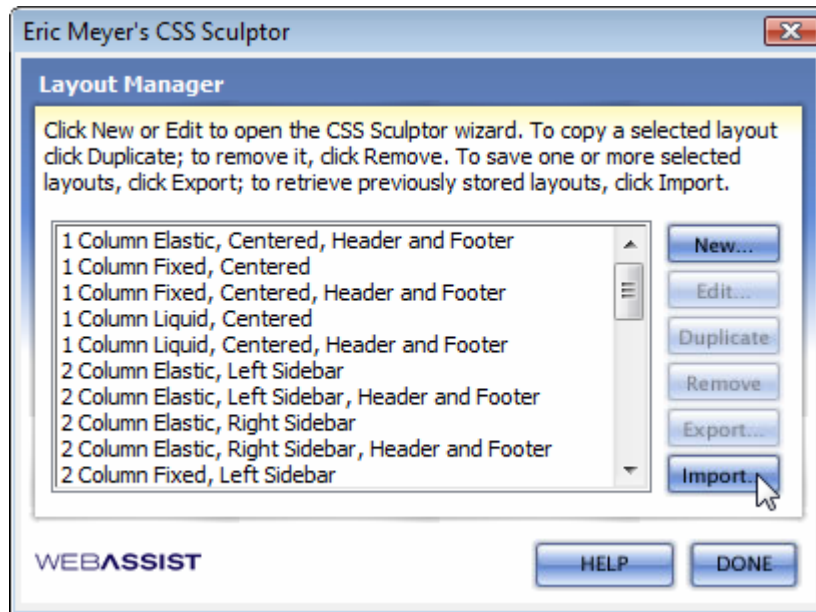
9. Click **Export**.



10. In the Export Layouts dialog box, navigate to the desired folder and enter a name in the File name field for your exported layout file.
11. When you return to the CSS Sculptor Layout Manager, click Done.

To import layouts:

1. In the CSS Sculptor Layout Manager, click **Import**.



2. When the Import Layouts dialog box appears, navigate to the desired folder and select the XML file previously exported from CSS Sculptor Layout Manager. Click **Open**.

The imported layouts are listed alphabetically after the standard layouts. If an imported layout has the same name as an existing layout, the name is incremented; for example if you import a file with a layout called My New Layout and a layout with that name already exists, the new layout will be called My New Layout 2.